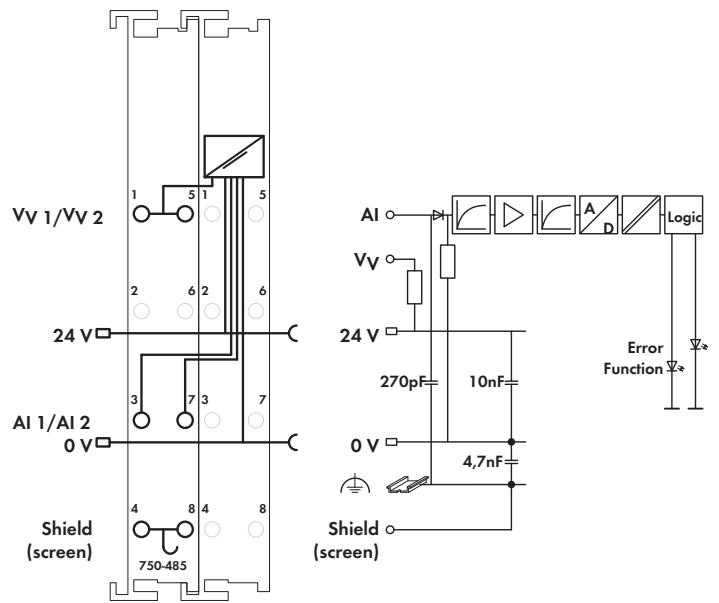
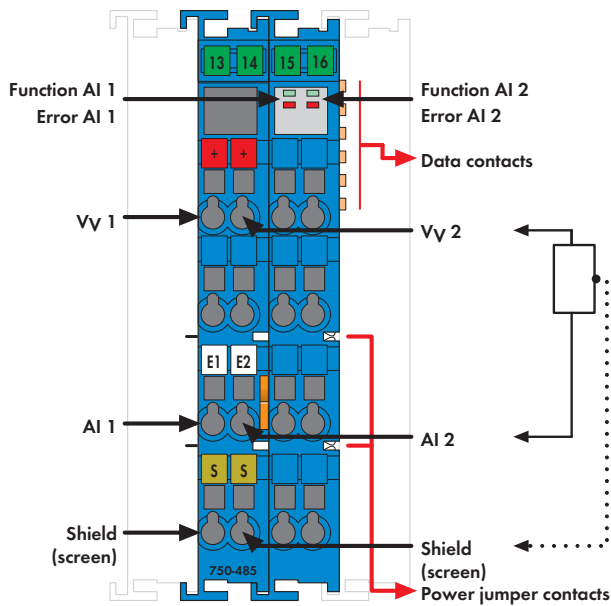


# 2-Channel Analog Input Module 4-20 mA, Ex i single-ended (S.E.)



Delivery without Mini WSB marker

The analog input module provides the power to the intrinsically safe transducers located in the hazardous area of Zone 1 and processes their analog signals. The WAGO-I/O-SYSTEM 750 has to be installed in Zone 2 or in non-hazardous environments. The 24 V supply is derived from the power jumper contacts. The transmitter supply is non-inherently electronically short-circuit-protected.

The shield (screen) is directly connected to the DIN rail.

Indicators:

- Green LED (signal on/off)
- Red LED (wire breakage, measuring range overflow/underflow)

Each output is electrically isolated from the bus by use of optocouplers.

**Note:**

Only use the analog input module in connection with the 24 V DC Ex i 750-625 Supply Module (note the power supply instructions on page 27)! General information (e.g. installation regulations) on explosion protection is available in the WAGO-I/O-SYSTEM 750 manuals!

Description	Item no.	Pack. unit
<b>2AI 4-20mA Ex i</b>	<b>750-485</b>	<b>1</b>
Accessories	Item no.	Pack. unit
<b>Miniature WSB quick marking system,</b>		
plain	<b>248-501</b>	5
with marking	see pages 256 ... 257	
Explosion Protection		
Ex directive	94 / 9 / EG; EN 50014, EN 50020, EN 60079-0, EN 60079-15	
Marking	⊕ II 3 (2) GD Ex nA [ib] IIC / IIB T4	
Electric circuit, safety relevant data	V <sub>0</sub> = 27.3 V; I <sub>0</sub> = 90 mA; P <sub>0</sub> = 0.61 W; Characteristic: Linear	
Intrinsically safe Ex ib IIB	L <sub>0</sub> = 18 mH; C <sub>0</sub> = 680 nF	
Intrinsically safe Ex ib IIC	L <sub>0</sub> = 5 mH; C <sub>0</sub> = 88 nF	
Intrinsically safe	without consideration of the simultaneousness; with consideration of the simultaneousness see manual	
Standards, Guidelines and Approvals		
EC EMC guideline	89 / 336 / EWG	
EC low voltage guideline	73 / 23 / EWG	
⊕ EN 50020	⊕ II 3 (2) GD Ex nA [ib] IIC / IIB T4	
Conformity marking	CE	
UL 508		
ANSI/ISA 12.12.01	Class I, Div. 2, Grp. ABCD, T4	
EN 60079-15	I M2 / II 3 GD Ex nA IIC T4	
Marine applications	see "Approvals Overview" in section 1	

Technical Data	
No. of inputs	2
Current consumption typ. (internal)	31 mA
Voltage via power jumper contacts	Supply via DC 24.7 V Ex i supply module (750-625)
Transmitter supply	V <sub>V</sub> = 16 V at 20 mA
Signal current	4 ... 20 mA
Input resistance	< 100 Ω
Resolution	12 bits
Conversion time	< 2 ms
Measuring error (25 °C)	< ± 0.2 % of the full scale value
Temperature coefficient	< ± 0.01 % / K of the full scale value
Current consumption typ. (field side)	11 mA + load
Power consumption P (max.)	1.3 W
Power loss P <sub>v</sub>	0.75 W
Isolation	375 V system/supply
Bit width	2 x 16 bits data 2 x 8 bits control / status (optional)
Wire connection	CAGE CLAMP®
Cross sections	0.08 mm <sup>2</sup> ... 2.5 mm <sup>2</sup> / AWG 28 ... 14
Stripped lengths	8 ... 9 mm / 0.33 in
Width	24 mm
Weight	48.5 g
EMC CE-Immunity to interference	acc. to EN 61000-6-2 (1999)
EMC CE-Emission of interference	acc. to EN 61000-6-4 (2002)
EMC marine applications -	
Immunity to interference	acc. to Germanischer Lloyd (2003)
EMC marine applications -	
Emission of interference	acc. to Germanischer Lloyd (2003)