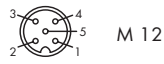






### Digital input



Pin	Function
1	+ 24 V
2	n.c.
3	0 V
4	Signal
5	Earth

### Remote bus Input



Pin	Function
1	DO
2	DO
3	DJ
4	DI
5	GND
6	n.c.
7	n.c.
8	n.c.
9	n.c.
Enclosure	Earth

### 24 V DC supply



Pin	Function
1	Earth
2	+24 V (remote installation bus)
3	0 V (remote installation bus)
4	+24 V (module supply+sensors)
5	0 V (module supply+sensors)
6	n.c.

### Remote bus Output



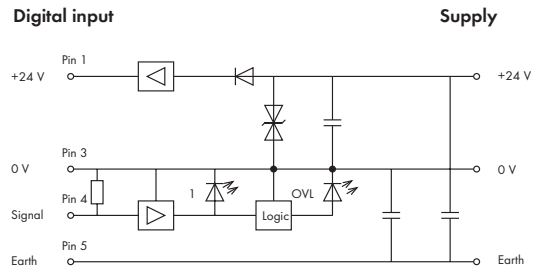
Pin	Function
1	DO
2	DO
3	DJ
4	DI
5	GND
6	n.c.
7	n.c.
8	n.c.
9	RBST
Enclosure	Earth

### Remote installation bus Connection



Pin	Function
1	DO
2	DO
3	DJ
4	DI
5	GND
6	Earth
7	+24 V
8	0 V
9	LBST
Enclosure	Earth

### Basic wiring diagram of an input



### Technical Data

<b>Slave profile</b>	
ID code	11 dec.
<b>Power supply - electronics</b>	
Nominal voltage	24 V DC
Voltage range	19 V ... 30 V DC
Current consumption	max. 120 mA
Reverse voltage protection	yes
Operating indicator (U <sub>I</sub> )	LED green
<b>Power supply - sensors</b>	
Nominal voltage (V <sub>s</sub> )	24 V DC
Voltage range	19 V ... 30 V DC
Total current of all sensors	max. 400 mA
Short circuit protection	yes
Sensor short circuit indication (OVL)	LED red
<b>Inputs</b>	
Nominal input voltage	24 V DC
Input	high-side switching
Number of digital channels	8
Status indication for each channel	LED yellow

### Technical Data

<b>General specifications</b>	
Degree of protection	IEC IP 67 (NEMA Type 4-6 P)
Ambient operating temperature	0 °C ... +60 °C
Weight	580 g
Dimensions (mm) W x H x L	60 x 48 x 186*
* including flange sockets	
<b>Diagnostic indication</b>	
LED 1 ... 8	Indicator yellow: channel active
LED ERR	Indicator red: remote installation bus
LED U <sub>I</sub>	Indicator green: module supply active
LED BA	Indicator green: bus active
LED RC	Indicator green: remote bus input connected
LED RD	Indicator red: remote bus output disconnected
LED LD	Indicator red: remote installation bus disconnected
LED OVL	Indicator red: sensor short circuit
<b>Bit assignment</b>	
Byte 0	0 ... 7 / n.c.)
Byte 1	8 ... 15 / Sensor 1 ... 8
Note:	Depending on the master card a "byteswap" may occur, resulting in a reversion of the data byte order!