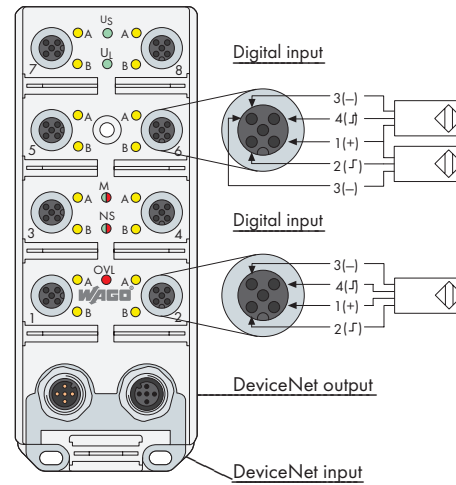


DeviceNet Slave

16 digital inputs



This item is a DeviceNet slave.

The maximum distance between two modules and the maximum line length of the entire network depends on the baud rate. Up to 16 digital inputs (see also item nos. 755-881/755-887) can be used to connect standard 3-conductor PNP sensors. The inputs are connected via M12 circular connectors. As an alternative, up to 8 digital inputs can be used to connect standard 4-conductor PNP sensors. The current supply of the sensors is short-circuit-proof.

A short circuit is indicated by a collective LED. The status of the inputs is also indicated by LEDs for each channel. The fieldbus is connected via M12 circular connectors. The status of the fieldbus is indicated by a LED. The supply voltage for the module and for the sensors is derived from the fieldbus connection. Various LEDs indicate the current status.

The power supply of the fieldbus, of the module electronics, and of the sensors are electrically isolated from each other.

Note: EDS files required

Description	Item No.	Pack. Unit
DeviceNet Slave 16DI 24V DC	755-121	1
Accessories		
Bus cable, power supply cable	Page 470	
Sensor/actuator cable	See section 5, pages 494 ... 507	
Other accessories	Page 472	
EDS files and software tool	Download: www.wago.com	
Approvals		
Certification	ODVA	
Conformity marking	CE	

System Data	
Total length	max. 500 m trunk cable (depends on baud rate); max. 6 m drop cable
Topology	Line structure with drop cables
No. of couplers connected to Master	63
Addressing	via master; via software tool (WAGO DeviceNet Node Commissioning)
Baud rate	500 kbaud
Communication	Explicit Message Connection Polled I/O Message Connection Bit Strobed I/O Message Connection Change of State / Cyclic Message Connection
User hierarchy	Multi-Master
Cycle time	depends on number of devices and baud rate
Transmission medium	certified DeviceNet cable
Terminating resistor	yes



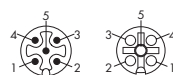
Digital input



Pin	Function
1	+24 V
2	Signal B
3	0 V
4	Signal A
5	Earth

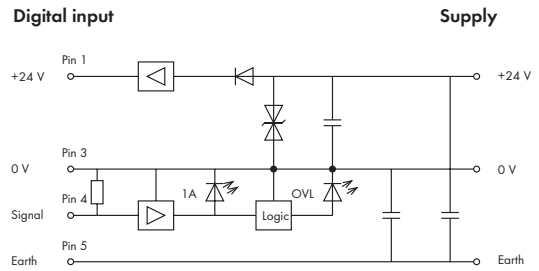
DeviceNet

Input Output



Pin	Function
1	Drain
2	V+
3	V-
4	CHA_H
5	CHA_L

Basic wiring diagram of an input



Technical Data

Bus system	
Type of module	Group 2 only, Server
Baud rate programmable via DN master	125 kbaud, 250 kbaud, 500 kbaud
MAC ID programmable via DN master	0 ... 63 dec.
MAC ID preset address	63 dec.
Power supply - electronics	
Nominal voltage	24 V DC
Voltage range	15 V ... 30 V DC
Current consumption	max. 80 mA
Reverse voltage protection	yes
Operating indicator (U ₁)	LED green
Power supply - sensors	
Nominal voltage (V _s)	> Bus voltage ... 1.5 V
Total current of all sensors	max. 800 mA
Short circuit protection	yes
Sensor short circuit indication (OVL)	LED red
Sensor supply indication (U _s)	LED green
Inputs	
Nominal input voltage	24 V DC
Input	high-side switching
Number of digital channels	16
Status indication for each channel	LED yellow

Technical Data

General specifications	
Degree of protection	IEC IP 67 (NEMA Type 4-6 P)
Ambient operating temperature	0 °C ... +60 °C
Weight	596 g
Dimensions (mm) W x H x L	60 x 51 x 152*
	* including flange sockets
Diagnostic indication	
LED 1 ... 8 A/B	Indicator yellow: channel active
LED U _s	Indicator green: sensor supply active
LED U ₁	Indicator green: module supply active
LED MS (module status)	1) Indicator green: module ready, 2) Indicator red blinking: non-critical error, 3) Indicator red: critical error
LED NS (network status)	1) Indicator green: online, connected with master, 2) Indicator green, blinking: online, no connection with master, 3) Indicator red, blinking: time out status for the last I/O connection, 4) Indicator red: BUS OFF status, redundant Mac ID
LED OVL	Indicator red: sensor short circuit
Bit assignment	
Byte 0	Bit 0 ... 7 / Sensor 1A ... 8A
Byte 1	Bit 0 ... 7 / Sensor 1B ... 8B
Byte 2	Bit 7 / Diagnosis: sensor overload