



WAGO-I/O-SYSTEM 758 WLAN ETHERNET Gateway 5 GHz 758-917

Version 1.0.1, applicable from HW/SW Version 01/01



© 2014 by WAGO Kontakttechnik GmbH & Co. KG
All rights reserved.

WAGO Kontakttechnik GmbH & Co. KG

Hansastraße 27
D-32423 Minden

Phone: +49 (0) 571/8 87 – 0
Fax: +49 (0) 571/8 87 – 1 69

E-Mail: info@wago.com

Web: <http://www.wago.com>

Technical Support

Phone: +49 (0) 571/8 87 – 5 55
Fax: +49 (0) 571/8 87 – 85 55

E-Mail: support@wago.com

Every conceivable measure has been taken to ensure the accuracy and completeness of this documentation. However, as errors can never be fully excluded, we always appreciate any information or suggestions for improving the documentation.

E-Mail: documentation@wago.com

We wish to point out that the software and hardware terms as well as the trademarks of companies used and/or mentioned in the present manual are generally protected by trademark or patent.

Table of Contents

1	Notes about this Documentation	5
1.1	Validity of this Documentation	5
1.2	Revision History	5
1.3	Copyright	5
1.4	Symbols	6
1.5	Number Notation	8
1.6	Font Conventions	8
2	Important Notes	9
2.1	Legal Bases	9
2.1.1	Subject to Changes	9
2.1.2	Personnel Qualification	9
2.1.3	Use in Compliance with Underlying Provisions	9
2.2	Special Use Conditions for ETHERNET Devices	10
2.3	Technical Condition of Specified Devices	10
2.4	Storage, Assembly and Transport	10
2.5	Safety Advice (Precautions)	11
3	Device Description	13
3.1	General Description	13
3.1.1	WLAN Operating Modes	13
3.1.2	LAN Connection Types	15
3.1.2.1	Bridge Connection	15
3.1.2.2	Direct Connection	15
3.2	View	16
3.3	Labeling	17
3.4	Connectors	18
3.4.1	Pin Assignment for Power Supply	18
3.4.2	Pin Assignment for System Connection	18
3.4.3	Antenna	19
3.5	Display Elements	21
3.6	Operating Elements	23
3.7	Technical Data	24
3.7.1	General Device Data	24
3.7.2	ETHERNET Interface	25
3.7.3	Radio Interface	25
3.7.4	Supply	25
3.8	Approvals	26
4	Mounting	27
4.1	Selecting the Installation Location	27
4.2	Fixing	29
5	Connect Devices	30
5.1	Connection	30
6	Commissioning	31
7	Configuration	32
7.1	Default Settings	32

7.2	Configuration Using the Mode Membrane Button	33
7.2.1	Selection and Activation of an Autoconfiguration Procedure.....	33
7.2.2	Overview of Autoconfiguration Procedures.....	36
7.3	Configuration Using the External Trigger Input.....	38
7.4	Configuration using the Web-based Management System (WBM)	39
7.4.1	Accessing the Web-based Management System	39
7.4.2	“Access Management” Section	42
7.4.3	“System Overview” Section.....	42
7.4.4	“Network Settings” Section.....	43
7.4.5	“Wireless LAN Settings” Section	45
7.4.6	“Miscellaneous” Section	48
7.4.6.1	Execution of AT Commands	49
8	Appendix.....	51
8.1	Sample Configurations.....	51
8.1.1	Preparation.....	51
8.1.2	Bridge Connection, without Access Point.....	51
8.1.2.1	Configuration of the 1st WEG Using the Mode Membrane Button.....	52
8.1.2.2	Configuration of the 2nd WEG Using the Mode Membrane Button.....	53
8.1.2.3	Configuration of the WEGs Using WBM	53
8.1.3	Bridge Connection, with Access Point.....	55
8.1.3.1	WEGs and Access Point wirelessly connected.....	55
8.1.3.2	Cable Connection between WEG and Access Point.....	58
8.1.4	Direct Connection, without Access Point.....	60
8.1.5	Direct Connection, with Access Point.....	62
8.2	Time Response	64
8.3	Data Rate	66
8.4	Coexistence	67
8.4.1	Basics.....	67
8.4.2	Optimizing the Device Configuration	68
8.5	Range in Open Field.....	69
8.6	Data Security for Radio Transmission	71
	List of Figures	72
	List of Tables.....	73

1 Notes about this Documentation

Note



Keep this documentation!

The operating instructions are part of the product and shall be kept for the entire lifetime of the product. They shall be transferred to each subsequent user of the product. Care must also be taken to ensure that any supplement to these instructions are included, if applicable.

1.1 Validity of this Documentation

This documentation is only applicable to the WLAN ETHERNET Gateway 5 GHz 758-917.

The device shall only be installed and operated according to the instructions in this manual.

1.2 Revision History

Table 1: Revision History

Document version	Device version		Revision
	Hardware	Firmware	
1.0.0	01	01	-
1.0.1	01	01	Editorial changes.

1.3 Copyright

This Manual, including all figures and illustrations, is copyright-protected. Any further use of this Manual by third parties that violate pertinent copyright provisions is prohibited. Reproduction, translation, electronic and phototechnical filing/archiving (e.g., photocopying) as well as any amendments require the written consent of WAGO Kontakttechnik GmbH & Co. KG, Minden, Germany. Non-observance will involve the right to assert damage claims.

1.4 Symbols

 **DANGER****Personal Injury!**

Indicates a high-risk, imminently hazardous situation which, if not avoided, will result in death or serious injury.

 **DANGER****Personal Injury Caused by Electric Current!**

Indicates a high-risk, imminently hazardous situation which, if not avoided, will result in death or serious injury.

 **WARNING****Personal Injury!**

Indicates a moderate-risk, potentially hazardous situation which, if not avoided, could result in death or serious injury.

 **CAUTION****Personal Injury!**

Indicates a low-risk, potentially hazardous situation which, if not avoided, may result in minor or moderate injury.

NOTICE**Damage to Property!**

Indicates a potentially hazardous situation which, if not avoided, may result in damage to property.

NOTICE**Damage to Property Caused by Electrostatic Discharge (ESD)!**

Indicates a potentially hazardous situation which, if not avoided, may result in damage to property.

Note**Important Note!**

Indicates a potential malfunction which, if not avoided, however, will not result in damage to property.

Information



Additional Information:

Refers to additional information which is not an integral part of this documentation (e.g., the Internet).

1.5 Number Notation

Table 2: Number notation

Number code	Example	Note
Decimal	100	Normal notation
Hexadecimal	0x64	C notation
Binary	'100' '0110.0100'	In quotation marks, nibble separated with dots (.)

1.6 Font Conventions

Table 3: Font conventions

Font type	Indicates
<i>italic</i>	Names of paths and data files are marked in italic-type. e.g.: <i>C:\Programme\WAGO-I/O-CHECK</i>
Menu	Menu items are marked in bold letters. e.g.: Save
>	A greater-than sign between two names means the selection of a menu item from a menu. e.g.: File > New
Input	Designation of input or optional fields are marked in bold letters, e.g.: Start of measurement range
“Value”	Input or selective values are marked in inverted commas. e.g.: Enter the value “4 mA” under Start of measurement range .
[Button]	Pushbuttons in dialog boxes are marked with bold letters in square brackets. e.g.: [Input]
[Key]	Keys are marked with bold letters in square brackets. e.g.: [F5]

2 Important Notes

This section includes an overall summary of the most important safety requirements and notes that are mentioned in each individual section. To protect your health and prevent damage to devices as well, it is imperative to read and carefully follow the safety guidelines.

2.1 Legal Bases

2.1.1 Subject to Changes

WAGO Kontakttechnik GmbH & Co. KG reserves the right to provide for any alterations or modifications that serve to increase the efficiency of technical progress. WAGO Kontakttechnik GmbH & Co. KG owns all rights arising from the granting of patents or from the legal protection of utility patents. Third-party products are always mentioned without any reference to patent rights. Thus, the existence of such rights cannot be excluded.

2.1.2 Personnel Qualification

All sequences implemented on the device may only be carried out by electrical specialists with sufficient knowledge in installation and handling of electrical equipment. The electrical specialists must also be familiar with the current standards and guidelines valid for the device.

2.1.3 Use in Compliance with Underlying Provisions

The device is used for wireless transmission of ETHERNET data packets per IEEE 802.3. A radio link must be set up for this to another device, for example a second WLAN ETHERNET Gateway 5 GHz 758-917, that also supports the applicable radio protocol.

The device has been developed for use in an environment that meets the IP65 protection class criteria. This specifies dust-tightness and protection against water jets (nozzle) from any angle. Operation in hazardous areas is prohibited.

2.2 Special Use Conditions for ETHERNET Devices

If not otherwise specified, ETHERNET devices are intended for use on local networks. Please note the following when using ETHERNET devices in your system:

- Do not connect control components and control networks to an open network such as the Internet or an office network. WAGO recommends putting control components and control networks behind a firewall.
- Limit physical and electronic access to all automation components to authorized personnel only.
- Change the default passwords before first use! This will reduce the risk of unauthorized access to your system.
- Regularly change the passwords used! This will reduce the risk of unauthorized access to your system.
- If remote access to control components and control networks is required, use a Virtual Private Network (VPN).
- Regularly perform threat analyses. You can check whether the measures taken meet your security requirements.
- Use “defense-in-depth” mechanisms in your system's security configuration to restrict the access to and control of individual products and networks.

2.3 Technical Condition of Specified Devices

The components to be supplied Ex Works, are equipped with hardware and software configurations, which meet the individual application requirements. WAGO Kontakttechnik GmbH & Co. KG will be exempted from any liability in case of changes in hardware or software as well as to non-compliant usage of components.

Please send your request for modified and new hardware or software configurations directly to WAGO Kontakttechnik GmbH & Co. KG.

2.4 Storage, Assembly and Transport

Whenever possible, the components are to be stored in their original packaging. Likewise, the original packaging provides optimal protection during transport.

When assembling or repacking the components, the contacts must not be soiled or damaged. The components must be stored and transported in appropriate containers/packaging. Thereby, the ESD information is to be regarded.

2.5 Safety Advice (Precautions)

For installing and operating purposes of the relevant device to your system the following safety precautions shall be observed:



DANGER

Always use voltage sources with current limitation/safety extra-low voltage!
Only use power supply sources based on IEC/EN60950 Section 2.5 “Power sources with limited output” with the device. The output of the external power supply must be short-circuit protected. The output voltage of the external power supply shall not exceed 30 VDC.

WARNING

Do not use device in hazardous environments!
The device is not designed for use in hazardous areas.

WARNING

Maintenance/Repair only by authorized specialists!
The device contains no parts that can be serviced by users. Always have all service, reconfiguration, maintenance or repair work performed by specialists authorized by WAGO.



DANGER

Do not work on components while energized!
All power sources to the device shall be switched off prior to performing any installation, repair or maintenance work.

CAUTION

Keep a distance of 20 cm to persons!
Install the device such that it is located at least 20 cm away from all persons during operation.

NOTICE

Replace defective or damaged devices!
Replace defective or damaged device (e.g., in the event of deformed contacts), since the long-term functionality of fieldbus station involved can no longer be ensured.

NOTICE**Protect the components against materials having seeping and insulating properties!**

The components are not resistant to materials having seeping and insulating properties such as: aerosols, silicones and triglycerides (found in some hand creams). If you cannot exclude that such materials will appear in the component environment, then install the components in an enclosure being resistant to the above-mentioned materials. Clean tools and materials are imperative for handling devices/modules.

NOTICE**Cleaning only with permitted materials!**

Clean soiled contacts using oil-free compressed air or with ethyl alcohol and leather cloths.

NOTICE**Avoid electrostatic discharge!**

The devices are equipped with electronic components that you may destroy by electrostatic discharge when you touch. Pay attention while handling the devices to good grounding of the environment (persons, job and packing).

NOTICE**Device uses radio waves!**

Never use the device in areas where operation of radio equipment is prohibited.

NOTICE**Do not open the enclosure!**

Never open the enclosure. Opening of the enclosure will nullify the guarantee, legal warranty and authorization for use.

3 Device Description

3.1 General Description

As a wireless ETHERNET gateway (WEG), the 758-917 device makes it possible to integrate conventional ETHERNET devices in a wireless network. For this purpose, the device has a wired ETHERNET interface and another interface for radio communication. The device uses the integrated radio technology to transmit the data received on the ETHERNET interface. Conversely, the device uses the ETHERNET interface to send data received on the radio interface. As data transmission of ETHERNET packets occurs with a transparent protocol on Layer 2 of the OSI reference model, this provides for easy integration of all Ethernet-based fieldbuses, such as MODBUS/TCP, ETHERNET/IP, PROFINET or PROFISAFE.

In combination with another function-related device, e.g., another WEG or Access Point (AP) of the same radio technology, the WEG can serve as a wireless replacement for ETHERNET cables. The WEG permits particularly robust, real-time radio connections over long distances. A suitable configuration can also prevent any degradation to other radio networks.

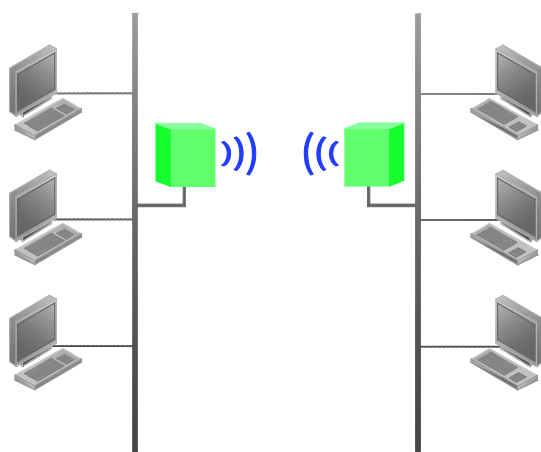


Figure 1: Wireless transmission between two WEGs

An innovative operator control concept enables easy initiation of automatic configuration processes using a Mode membrane key on the device. This can be used to configure a substitute cable link between two WEGs in only a few seconds, without using additional aids or hardware / software.

In addition to operation using the Mode membrane key and the 7 LED status indicators, access to other status information and advanced device functions of the WEG is also possible via a Web-based Management System (WBM).

Depending on the application, the unit can be operated in various modes.

3.1.1 WLAN Operating Modes

WLAN distinguishes between two fundamentally different network operating modes: Infrastructure mode and ad-hoc mode.

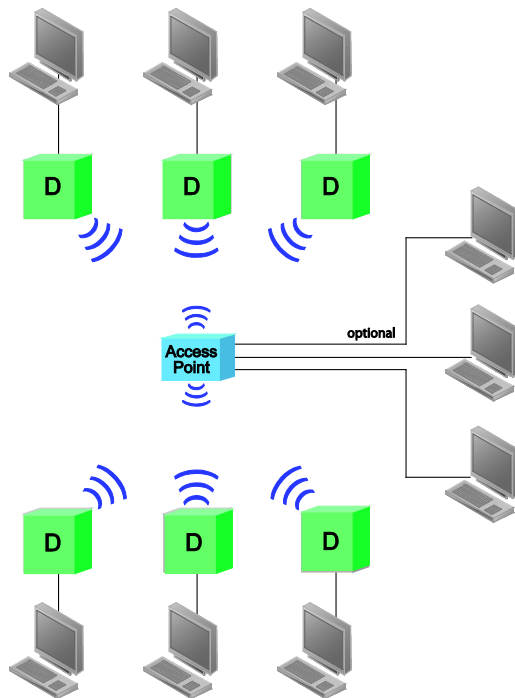


Figure 2: Infrastructure mode

In infrastructure mode, a distinction is made between two roles for devices in the network. One of the WLAN devices must act as an access point and centrally manage the network while all other WLAN devices act as clients.

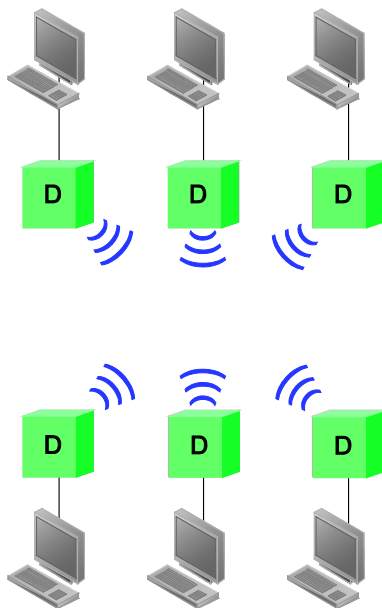


Figure 3: Ad-hoc mode

In ad-hoc mode, the attached WLAN devices manage the network peripherally. Due to the higher administrative effort, only lower data rates and limited security mechanisms are available in contrast to the infrastructure mode.

The WEG can establish a connection with WLAN networks of both operating modes, but cannot function as an access point itself. If an access point is available

and the WEGs can be configured via Web-based Management, the preferred method of operation for the WLAN is in infrastructure mode. This permits higher data rates and the use of better security mechanisms.

3.1.2 LAN Connection Types

Independent of the selected WLAN operating mode, the WEG can be configured for two different LAN connection types: Bridge connection and direct connection.

3.1.2.1 Bridge Connection

Similar to using an ETHERNET switch, the bridge connection makes it possible to connect two ETHERNET segments. To this end, exactly two WEGs must be configured in the network, so that a connection transparent for LAN devices (a bridge) is created between them. In this way, connected WEGs are functionally comparable to two ports of an ETHERNET switch to which other ETHERNET hubs or switches can also be connected.

Note



Bridge connection between two ETHERNET segments only!

A WEG can use a bridge connection to connect exactly one locally connected ETHERNET segment with exactly one ETHERNET segment connected to another WEG. It is not possible, for example, to connect three ETHERNET segments in this manner.

Note



DHCP is not supported with bridge connections!

If a bridge connection is established, the IP addresses of the WEGs must be static. Automatic reference of IP addresses via DHCP is not supported for this connection type.

3.1.2.2 Direct Connection

In a direct connection, a WEG can be used as a wireless adapter for exactly one wireless ETHERNET device. The WEG acts as a wireless extension of the wired network interface of this reference device by cloning its ETHERNET MAC address. Therefore, the reference device must be connected to the associated WEG directly. If an ETHERNET segment is connected to several instead of a single ETHERNET device, only the reference device can use the WEG as a wireless adapter without restriction.

3.2 View



Figure 4: View

Table 4: Legend for the “View” figure

No.	Description	Details see Section:
1	Status and diagnosis LEDs (front)	“Display Elements”
2	Internal circular polarized directional antenna 5 dB	“Connectors”
3	Fixing hole 1	“Mounting”
4	LEDs for link quality indication (bottom), configuration and status indication	“Display Elements”
5	Mode membrane key for configuration	“Operating Elements”
6	Network connection, M12 socket on device	“Connectors”
7	Power supply, M12 connector on device	“Connectors”
8	Fixing hole 2	“Mounting”

3.3 Labeling

The status indicators for (POWER, ((.)), LAN) are marked on the front of the device.

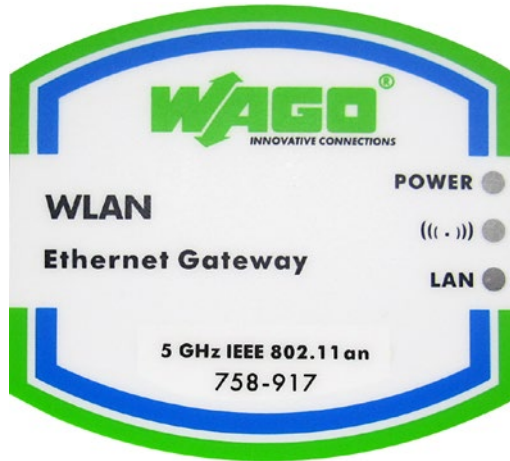


Figure 5: Marking on front of device

The connections (Power, LAN), link quality and configuration button (Mode) are marked on the bottom of the device.



Figure 6: Marking on bottom

The device MAC address is included with other device data on the nameplate on the back or side of the device.



Figure 7: Nameplate on back/side

3.4 Connectors

The device is equipped with two connections at the bottom:



Figure 8: Connections at bottom of device

Table 5: Legend for the “Connections at bottom of device” figure

No.	Description
1	Power supply and trigger input (“Power”)
2	Network connection (“LAN”)

3.4.1 Pin Assignment for Power Supply

Power is supplied to the device via a 5-pole, A-coded M12 connector.

Table 6: Power supply, M12 Connector on Device

	Pin	Pin assignment
	1	$V_{in} + (9\text{ V} \dots 30\text{ VDC})$
	2	Trigger input ground
	3	V_{in} Ground (0 V)
	4	Trigger-input + (9 V ... 30 VDC)
	5	Not in use

3.4.2 Pin Assignment for System Connection

The device is connected to the ETHERNET network via a 4-pole, D-coded socket and supports autonegotiation for 10/100 Mbit and the duplex mode.

Table 7: System connection, M12 Socket on Device

	Pin	Pin assignment
	1	Transmit +
	2	Receive +
	3	Transmit -
	4	Receive -

3.4.3 Antenna

The device is equipped with an internal antenna. Good reception conditions exist when the front of the device is oriented centered to the remote device with which the radio link is to be established.



Figure 9: Aligning the device

The alignment characteristic for the internal antenna is primarily relevant for links in the open field and over long distances. When operating the device at short distances, inside buildings or without line-of-sight links structural conditions are the decisive factor for good reception.

As the device comes equipped with a circular polarized antenna, rotation of the device around the link axis between the local and remote device does not have any adverse impact on link quality.

The directional alignment (antenna) diagrams for the antenna are given in the following figures for a frequency of 5.25 GHz.

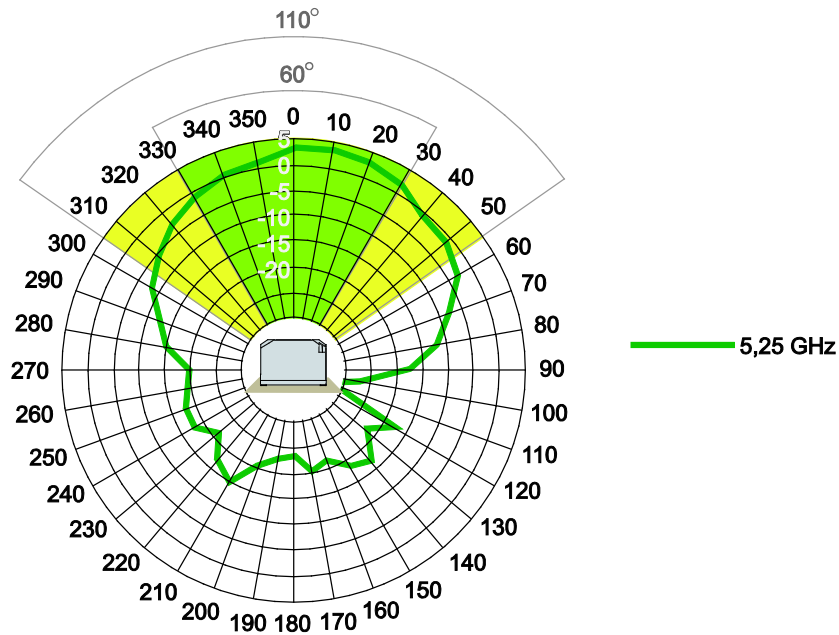


Figure 10: Antenna diagram 5.25 GHz – longitudinal axis

The diagram above illustrates the two-dimensional top view of the electromagnetic field of the antenna, with the antenna being the center point. At a beam angle of around 60° the antenna provides excellent reception levels; reception continues to be good up to an angle of 90°, whereas reception markedly deteriorates at beam angles of 110° and greater.

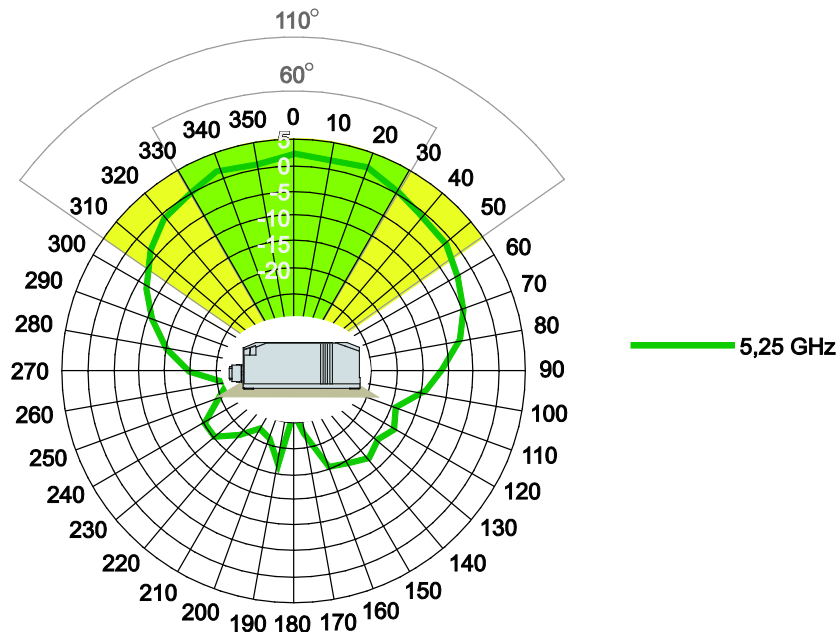


Figure 11: Antenna diagram 5.25 GHz – transverse axis

The diagram above shows the side view of the antenna's electromagnetic field.

3.5 Display Elements

The current device status is indicated by the three LEDs on the front of the WEG.

Four other LEDs at the bottom of the device indicate the link quality, or the selected autoconfiguration procedure.



Figure 12: Display elements

Table 8: Legend for the “Display elements” figure

Nr.	Designation	Color	Status	Meaning
1	Power	green	On	Device ready for operation
			Off	Device not ready for operation
2	((•))	blue purple red	Blue	Wireless link active
			Blue flashing	Data transmission
			Purple	Setting up link to other radio device
			Red	Error
			Off	No wireless link available
3	LAN	yellow	On	ETHERNET link available
			Blinking	ETHERNET communication active
			Off	No ETHERNET link available
4	Link Quality*	green	A on	Acceptable link quality
			A+B on	Good link quality
			A+B+C on	Optimal link quality
			A on	Acceptable link quality
			A+B on	Good link quality

* Status signals are also indicated via LEDs A to D during configuration. In this case, the indicators will differ from the status information given here, see Section “Configuration using the Mode membrane button”.

Note



Observe the operating mode!

The indicators for wireless and ETHERNET link are only valid when the power LED signals “Device ready for operation”. In special modes, such as device initialization or firmware update, the LEDs mentioned previously may respond differently than described above.

Note



Display of the link quality in conjunction with access point only!

LEDs A to D are only available for visualization of the link quality when the WEG is connected to an access point (infrastructure mode). In an ad-hoc network, this status indication is not available.

3.6 Operating Elements

The “Mode” membrane button is located at the bottom of the device. This button is used to initiate certain autoconfiguration procedures. LEDs A to D indicate which procedure is active. For more information about this refer to the Section “Configuration using the Mode membrane button”.

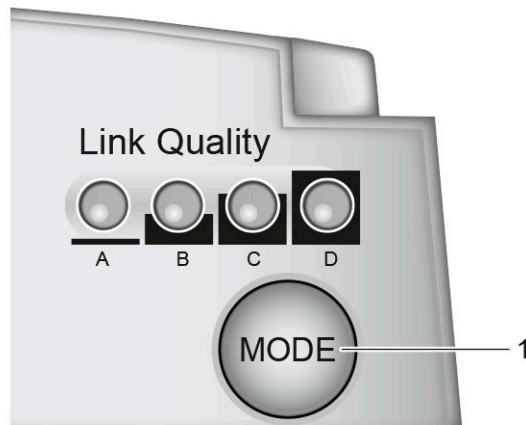


Figure 13: Operating element

Table 5: Legend for the “Operating element” figure

No.	Description
1	Mode membrane button

3.7 Technical Data

3.7.1 General Device Data

Table 9: Technical Data – General Device Data

Function	Wireless ETHERNET Gateway (WEG)
Dimensions (mm) W x H x D	66 x 91 x 36
Weight	120 g
Ports	Power connector: M12 plug, A-coded ETHERNET connector: M12 socket, D-coded
Operating temperature	-30 °C ... + 65 °C
Storage temperature	-40 °C ... + 85 °C
Degree of protection	IP65
Relative humidity (without condensation)	95 %
Connection to PE	Not required
Fitting position	On a level mounting surface
Free from silicone	Yes
RoHS-compliant	Yes
Configuration	Via Web-based Management System or using the Mode membrane button
Immunity to interference	Static discharge based on EN 61000-4-2: Contact discharge ± 6 kV Air discharge ± 8 kV Electromagnetic fields based on IEC61000-4-3: 10 V/m, Criterion A Mains borne disturbance based on IEC 61000-4-6: 10 V RMS, Criterion A Rapid transients (burst) based on IEC 61000-4-4: Data interface: 1 kV Power supply: 2 kV Surge voltage based on IEC 61000-4-5: Data interface: ± 1 kV Power supply: ± 0.5 kV
Emission of interference	per EN 55022 Class B (residential areas)
Mechanical stability	Shock test based on IEC 60068-2-27 Operation 25 g, duration 11 ms Storage/Transport 50 g, duration 11 ms Vibration test based on IEC 60068-2-6 Operation 5 g, 10-150 Hz, Criterion 3 Free fall based on IEC 60068-2-32 1 m

3.7.2 ETHERNET Interface

Table 10: Technical Data – ETHERNET Interface

Number of inputs	1
Medium	Via M12, twisted pair wire, wire cross section 0.14 mm ² ... 0.22 mm ²
Transmission rate	10/100 MBit/s, Autonegotiation
Default IP address	192.168.1.99
Default subnet mask	255.255.255.0

3.7.3 Radio Interface

Table 11: Technical Data – Radio Interface

Protocol	IEEE 802.11 a/n, max. 58.5 MBit/s
Antenna	Internal directional antenna (non-exchangeable)
Transmission range	Up to 400 m (open field)
Topology	Infrastructure, Ad-hoc
Connection type	Client

3.7.4 Supply

Table 12: Technical Data – Power Supply

Power supply connection	Via M12, max. wire cross section 2.5 mm ²
Nominal Voltage	24 VDC (SELV)
Voltage range, permissible	9 V ... 30 VDC
Current consumption, typical	80 mA at 24 VDC
Current consumption, maximum	120 mA at 24 V

3.8 Approvals



Conformity Marking

IC „Industry Canada“

IC: 5325A-0941



FCC “Federal Communications Commission”
/ CFR 47 Part 15, ETS 300328

FCC ID: PVH0941

This device complies with Part 15 of the FCC Rules. Operation is subject to the following two conditions:
(1) this device may not cause harmful interference, and (2) this device must accept any interference received, including interference that may cause undesired operation.

With the exception of Andorra, Bulgaria, France and Latvia, the device may be used without restrictions in all European countries and in Switzerland, the USA and Canada.

The device may be used inside buildings in Bulgaria.

In France, the transmitting power must be limited to 10 dBm when used outside of buildings. In Norway the device may not be used with a radius of 20 km of the town center of Ny-Ålesund (Spitzbergen).

4 Mounting

4.1 Selecting the Installation Location

In order to use all the functions of the WEG, a radio link must be established to a device having similar functions, for example a second WEG of the same type. If the two devices are relatively close to one another, that is, if the distance between them is considerably less than the potential range, the installation location and device alignment will have comparatively little impact on the radio link. If you wish to set up and maintain a radio link over the longest distance possible, however, certain requirements regarding the installation of the device and the ambient conditions must be fulfilled.

The distance between devices may not be too great. The maximum range can only be effective under optimal conditions. A lack of line-of-sight link, or misalignment of the devices will result in reduced range.

For a line-of-sight link, install the devices such that the antennas are aligned toward one another, i.e., the marked front side of the devices face one another (see also the figure and the antenna diagrams in the section “Connectors” > “Antenna”).

If there is no line-of-sight link, but both devices have an unobstructed view of the same metallic or concrete surface (such as a building ceiling), a good radio link can be ensured through reflection.

If there is neither a line-of-sight link, nor a surface to use for reflection, for example between devices in different rooms, align the devices as for a line-of-sight link. The magnitude of the reduction in range for the devices in this case depends on the amount of material, e.g., brick walls, that the radio waves must pass through. In some circumstances, it may not be possible for the radio waves to penetrate certain obstacles, such as fire protection walls, at all.

Table 13: Selection of Installation Location

Ambient Conditions, Installation Location	Radio link possible?
Distance between devices is more than 400 m.	No
Line-of-sight link between devices that are about 200 m apart. Devices have been optimally installed and configured.	Yes
Two plaster or brick walls are located between the devices; distance between devices is around 30 m.	Yes. Links are also possible without line of sight, but the range is substantially reduced, depending on the obstacle (e.g., a wall).
A fire protection wall or a steel-reinforced concrete ceiling is located between the devices.	No. Reinforced concrete and other similar materials cannot be penetrated by radio waves when they are too thick.
The devices are located less than 50 m apart in a plant building, with the line of sight being obstructed by numerous machines or vehicles.	Possible. Building ceilings or other metallic or steel-reinforced large objects may permit an indirect link by reflecting the radio waves.

4.2 Fixing

Note



Always maintain a minimum distance of 50 cm between two WEGs!
Always maintain a distance of at least 50 cm between WEGs when installing them. Radio link quality can be degraded on failure to maintain this distance.

Note



Do not install antenna directly in front of metallic surfaces!
The front of the WEG, and hence the internal antenna, shall not be located directly in front of metallic surfaces, as this can permanently degrade the radio capabilities of the antenna.

Use the drilled holes (see drawing below), for example, and the two M3 screws to attach the WEG to any flat, level surface.

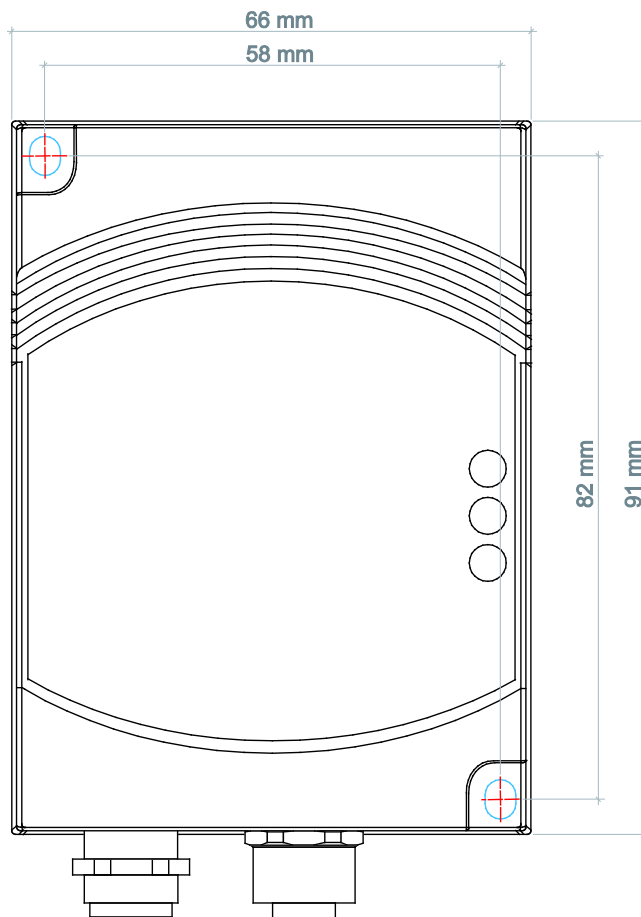


Figure 14: Drilled holes for attaching the WEG

5 Connect Devices

5.1 Connection

Before the device can be used, all cable connections must be established.

NOTICE

Ensure that wires are not live!

Power supply: Do not switch on the power supply until the device has been properly connected.

LAN: Improperly routed ETHERNET cables can carry dangerous overvoltage. Always ensure that these cables have been laid properly before connecting the device to the network.

1. Use a suitable cable, such as WAGO Item 756-1203/060-050, to connect the WEG to your network or ETHERNET terminal.
2. Use a suitable cable, such as WAGO Item 756-3101/040-020, to connect the WEG to the external power supply unit.

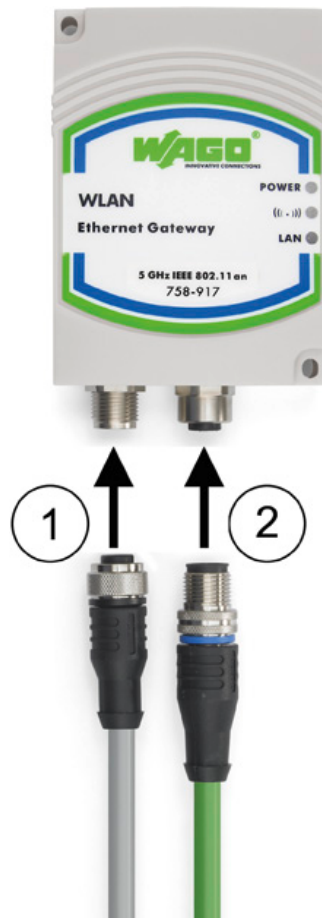


Figure 15: Connecting the WEG

6 Commissioning

The device is not equipped with a power switch, meaning it is put into operation simply by applying power.

Note



Use the correct supply voltage!

The output of the power supply unit must provide 24 VDC with a maximum current flow of 200 mA.

Switch on the external power supply unit to put the device into operation.

7 Configuration

After you have connected the WEG you can configure it in one of two ways:

- using the **Mode membrane button** and by activating certain modes
- by making settings via the **Web-based Management System (WBM)**

The various types of configuration are described in the following sections.

If the device has already been configured and you are not familiar with the current configuration, we recommend resetting the device to its factory default settings before making any further configuration settings. This can be done using the Mode membrane button.

7.1 Default Settings

The following settings are active on initial startup of the WEG:

Tabelle 14: Default Settings

Group	Parameter	Default value
Access Management	Password	“wago”
Network Settings	IP Address	“192.168.1.99”
Network Settings	Subnet Mask	“255.255.255.0”
Network Settings	Default Gateway	“192.168.1.99”
Network Settings	IP Assignment	“Static”
Wireless LAN Settings	Network Name (SSID)	(empty)
Wireless LAN Settings	Operating Mode	“Infrastructure”
Wireless LAN Settings	Channel	“0 (Auto)”
Wireless LAN Settings	Channel List	“36-64, 100-140”
Wireless LAN Settings	Data Rate	“0 (Auto)”
Wireless LAN Settings	Transmit Power	“+17 dBm”
Wireless LAN Settings	Security Mode	“None”
Wireless LAN Settings	Mode	“Multi-Client”
Wireless LAN Settings	WLAN MAC Address	(same as parameter ETHERNET MAC Address)
Miscellaneous	SMART Modes	“4”
S Register 1216	Action triggered by event TRIGGER_PUSH	“0”
S Register 1217	Action triggered by event TRIGGER_HOLD	“0”

You can always restore the factory default settings at any time using the Mode membrane button (see following section). This can be useful, for example, if you have forgotten the IP address or the device AT password.

7.2 Configuration Using the Mode Membrane Button

The quickest and easiest method for configuring the device is using the Mode membrane button located at the bottom of the device. LEDs A to D indicate the status during configuration, based on the active operating mode. By repeatedly pressing the Mode membrane button you can select and start an autoconfiguration procedure in the device that then automatically carries out the device configuration for the required scenario.

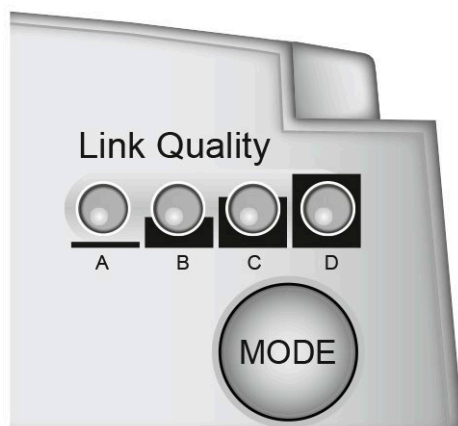


Figure 16: Mode membrane button and status LEDs

7.2.1 Selection and Activation of an Autoconfiguration Procedure

General procedure:

1. Switch off the power supply to the WEG and then re-activate power supply to the device.

The Power LED lights up.

2. Within **the first 5 seconds** after applying power, press the Mode membrane button to switch to the operating mode "Configuration selection".

LED A lights up and the operating mode "Configuration selection" is active. If this is not the case, repeat steps 1 and 2.

3. Select the autoconfiguration procedure:
Select the required autoconfiguration procedure by pressing the Mode membrane button until the appropriate combination of LEDs lights up (see previous section "Overview of Autoconfiguration Procedures").
If you have switched through all the operating modes in order, you can return to the first option in the order by pressing the button again.



Note

Configuration is halted if the Mode membrane button is not pressed for 20 s!
The mode “Configuration selection” is de-activated automatically if you do not press the Mode membrane button for selecting the autoconfiguration procedure. The WEG will then start up using the previous settings.

4. Activate autoconfiguration procedure:
To execute the selected autoconfiguration procedure press the Mode membrane button again and hold it in for **at least 2 seconds** until the LED indicators A-D or the Power LED change.

The device performs a restart as soon as the procedure has been completed successfully or canceled.

The behavior of the device up to this restart is based on the active autoconfiguration procedure:

- | | |
|-------------------|---|
| Procedures 2, 3: | The device carries out the changes to the configuration and ends the procedure directly after this.
This only takes a few seconds. |
| Other procedures: | The LEDs A-D corresponding to the procedure will flash until the procedure is concluded. All of these procedures can also be manually terminated prematurely by pressing the Mode membrane button again, or by briefly disconnecting the power supply from the device. These procedures end automatically on successful configuration of a link, or after a timeout of 5 minutes. |

The LEDs return to their normal status on conclusion of the autoconfiguration procedure.

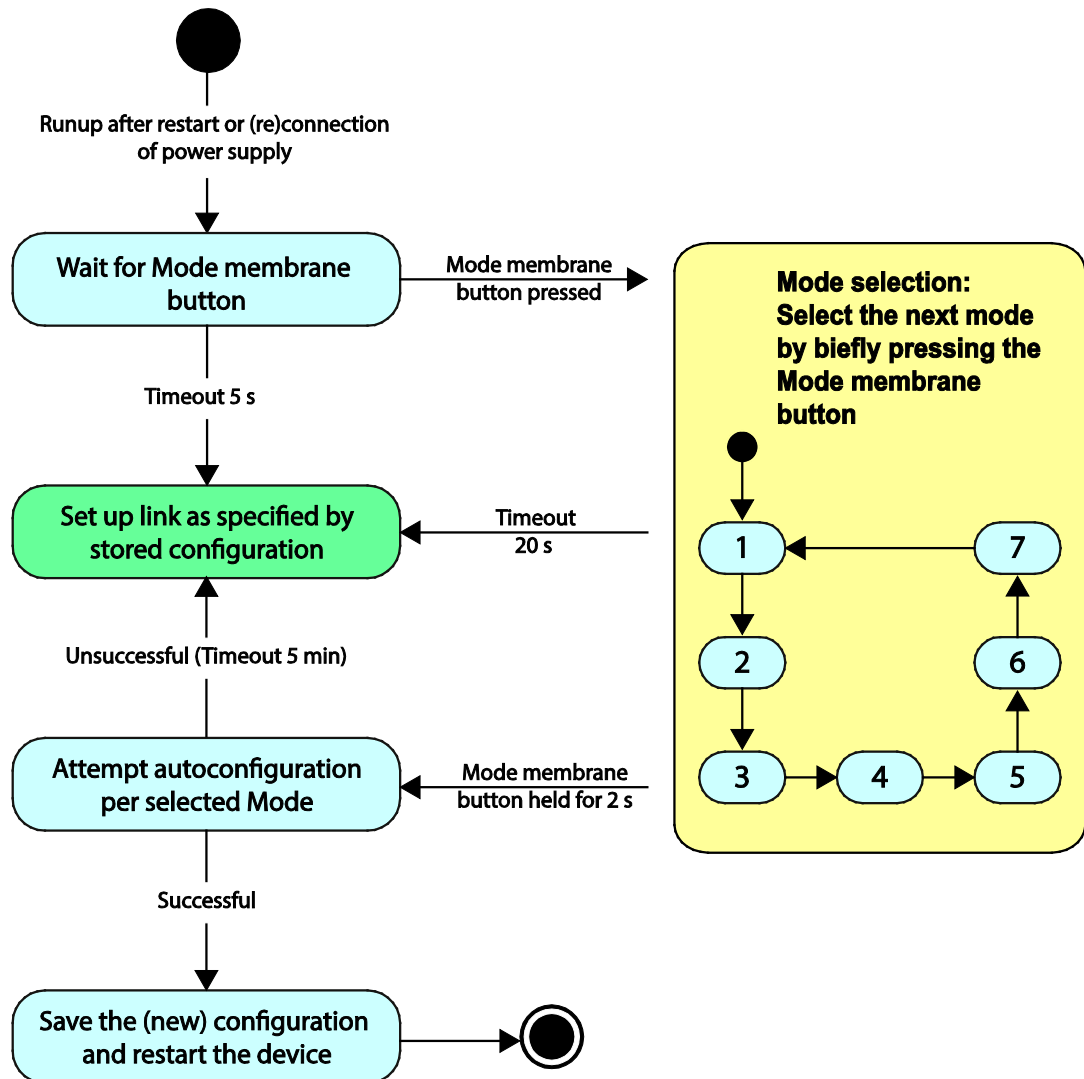


Figure 17: Flow chart

Note










Enable de-activated WBM using the Mode membrane button!

If autoconfiguration is conducted with PROFINET optimization, the device de-activates the Web-based Management System to provide short cycle times. Consequently, configuration can only be changed using the Mode membrane button. Reset the device to the factory default settings to enable access to the Web-based Management System again.

7.2.2 Overview of Autoconfiguration Procedures

The following autoconfiguration procedures can be selected in the order given:

Table 15: Autoconfiguration Procedures

Press button	Autoconfiguration Procedures	LED A B C D
1 x	1 Automatically obtain temporary IP parameters The device attempts to obtain temporary IP parameters from a DHCP server. Parameters obtained in this manner are only valid until the next reboot.	A 
2 x	2 Reset device to factory default settings Restore all settings to the factory default settings.	B 
3 x	3 Reset IP parameters Restore the IP parameters to the factory default settings. All other settings are retained.	A+B 
4 x	4 Wait for automatic configuration The device will wait for configuration by a different WEG that executes the Autoconfiguration procedure "Initiate automatic configuration". Although the device is connectable, it will not initiate the setting up of a link.	C 
5 x	5 Initiate automatic configuration The device automatically sets up a link to a different WEG that executes the Autoconfiguration procedure "Wait for automatic configuration". When a connection has been established, both WEGs are automatically configured for a bridge connection.	A+C 
6 x	6 Wait for automatic configuration, with PROFINET-/PROFISAFE optimization The device will wait for configuration by a different WEG that executes the Autoconfiguration procedure "Initiate automatic configuration, with PROFINET-/PROFISAFE optimization". Although the device is connectable, it will not initiate the setting up of a link.	B+C 
7 x	7 Initiate automatic configuration, with PROFINET-/PROFISAFE optimization The device automatically sets up a link to a different WEG that executes the Autoconfiguration procedure "Wait for automatic configuration, with PROFINET-/PROFISAFE optimization". When a connection has been established, both WEGs are automatically configured for a bridge connection and PROFINET/PROFISAFE optimization activated.	A+B+C 

On configuration using the Mode membrane button, only those parameters required for the particular autoconfiguration will be overwritten.

You can use the Web-based Management to make changes to the settings not affected by the respective autoconfiguration. These changes also remain effective after a configuration using the Mode membrane button.

Autoconfiguration procedures 1 to 3 always become effective; procedures 2 and 3 change the device configuration immediately.

Autoconfiguration procedures 4 to 7 only change the device configuration when a radio link has been successfully established. If the WEG loses power before the autoconfiguration has been completed, or if no other WEG can be contacted via the radio link within 5 minutes for automatic configuration, the device will retain its previous configuration settings when it is restarted.

The following settings are overwritten in the course of the various autoconfiguration procedures:

Table 16: Overwriting of Configuration

Autoconfiguration procedure	Changes to Configuration on Successful Setup of Link
1	The following settings are temporarily modified: <ul style="list-style-type: none"> • Network Settings > IP-Address: "192.168.1.99" • Network Settings > Subnet Mask: "255.255.255.0" • Network Settings > Default Gateway: "192.168.1.99" • Network Settings > IP Assignment: "Static & DHCP Server" The saved configuration is restored after rebooting the device.
2	All settings are changed.
3	<ul style="list-style-type: none"> • Network Settings > IP-Address: "192.168.1.99" • Network Settings > Subnet Mask: "255.255.255.0" • Network Settings > Gateway: "192.168.1.99" • Network Settings > IP Assignment: "Static"
4	<ul style="list-style-type: none"> • Network Settings > IP-Address: "192.168.1.99" • Network Settings > Subnet Mask: "255.255.255.0" • Network Settings > Gateway: "192.168.1.99" • Network Settings > IP Assignment: "Static" • Wireless LAN Settings > Network Name (SSID): (as partnered device) • Wireless LAN Settings > Operating Mode: "Ad-Hoc" • Wireless LAN Settings > Security Mode: "WEP128" • Wireless LAN Settings > Passkey: (as partnered device) • Wireless LAN Settings > IP Address: "192.168.1.100" • Wireless LAN Settings > UDP Port: "7"
5	<ul style="list-style-type: none"> • Network Settings > IP-Address: "192.168.1.100" • Network Settings > Subnet Mask: "255.255.255.0" • Network Settings > Gateway: "192.168.1.99" • Network Settings > IP Assignment: "Static" • Wireless LAN Settings > Network Name (SSID): (as partnered device) • Wireless LAN Settings > Operating Mode: "Ad-Hoc" • Wireless LAN Settings > Security Mode: "WEP128" • Wireless LAN Settings > Passkey: (as partnered device) • Wireless LAN Settings > IP Address: "192.168.1.99" • Wireless LAN Settings > UDP Port: "7"
6	As autoconfiguration procedure 4, but also: <ul style="list-style-type: none"> • De-activate the Web-based Management System • Activate PROFINET optimization
7	As autoconfiguration procedure 5, but also: <ul style="list-style-type: none"> • De-activate the Web-based Management System • Activate PROFINET optimization

7.3 Configuration Using the External Trigger Input

The external trigger input can be used to signal the device of one of two events. Which process is triggered can be configured for each event (see Section “Configuration Using Web-based Management”).

Before the trigger input can be used in this manner, the power supply to the trigger input must be switched off.

- To signal the TRIGGER_PUSH event, apply a voltage to the trigger input for a period of less than 2 seconds. The signal is triggered when the power supply to the trigger input is switched off again.
- To signal the TRIGGER_HOLD event, apply a voltage to the trigger input for a period of more than 2 seconds. The signal is triggered after approx. 2 seconds.

Note



Switch off the power supply to the trigger input again!

The device ignores when the Mode Membrane button is pressed when the external trigger input has power. Therefore, always switch off the power supply to the trigger input after signaling TRIGGER_HOLD.

7.4 Configuration using the Web-based Management System (WBM)

A Web-based Management System (WBM) is available on an integrated Web server for configuring the WEG.

You can go the WBM by entering the IP address of the device in the browser URL line.

Device configuration is password protected. On initial commissioning, the device uses the static IP address and the default settings password (see section “Default Settings”). If you have forgotten the IP address or password you can reset the device to its factory default settings.

The IP address of the PC used to access the WBM must be in the same subnet as the WEG. You may have to modify the IP configuration of the PC from which you are accessing the WBM before a link can be set up. If the PC is configured to get the IP address via DHCP automatically, you can connect the WEG and PC directly and temporarily activate the integrated DHCP server of the WEG via autoconfiguration procedure 1 (see section “Configuration Using the Mode Membrane Button”).

7.4.1 Accessing the Web-based Management System

1. To open the WBM, launch a Web browser (e.g., Microsoft Internet Explorer or Mozilla Firefox).
2. Enter the IP address of the WEG on the URL line and confirm by pressing [Enter].

Note



For WBM access; check the IP/firewall settings and the connection!

If you are not granted access to the WBM check the IP configuration for the PC from which you wish to access the WBM and the settings for the firewalls being used. Ensure that the WEG is properly connected and ready for operation and that the specified IP address is correct. Should you still not be able to set up a connection to the WBM after ruling out any error at the PC, or if you have forgotten the IP address of the WEG, reset the device to its factory default settings.

When access has been made to the WBM the WEG will display an overview page showing status information and operating elements for changing the device configuration (see figure below).

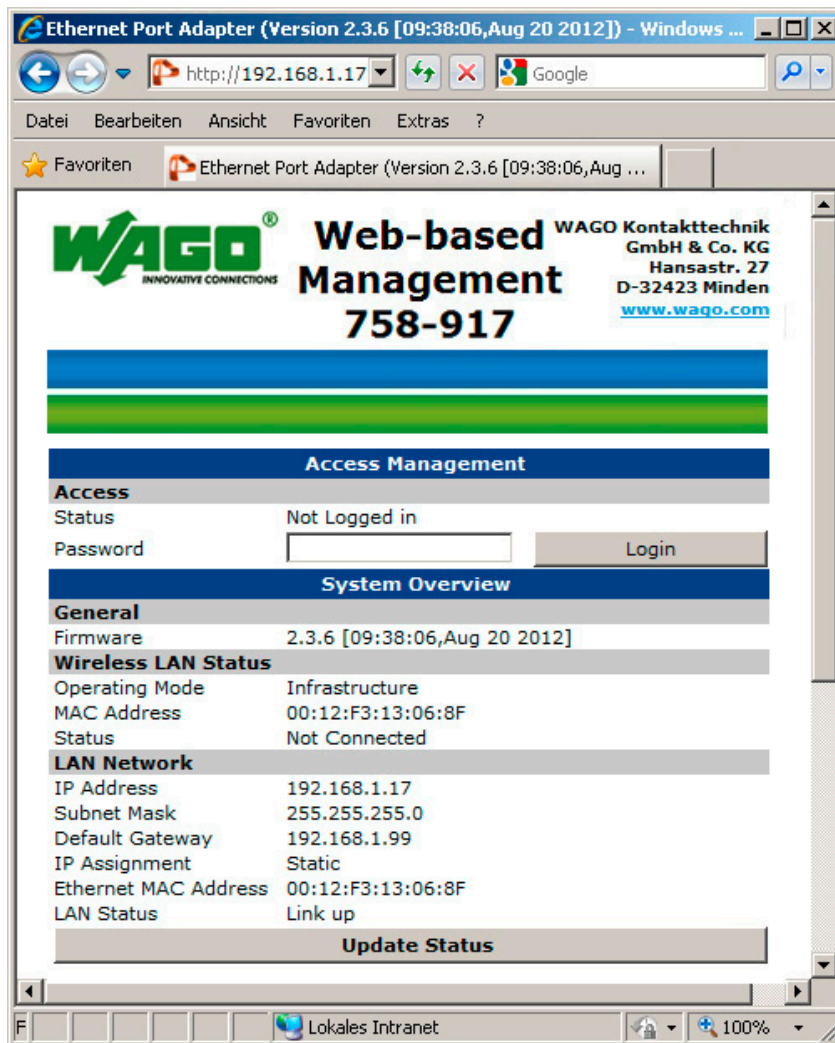


Figure 18: WBM main page before login

Before taking any further steps you should log on to the system using a valid password:

3. Enter your password in the field **System Overview > Password**.
4. Send the password by clicking on **[Login]**.

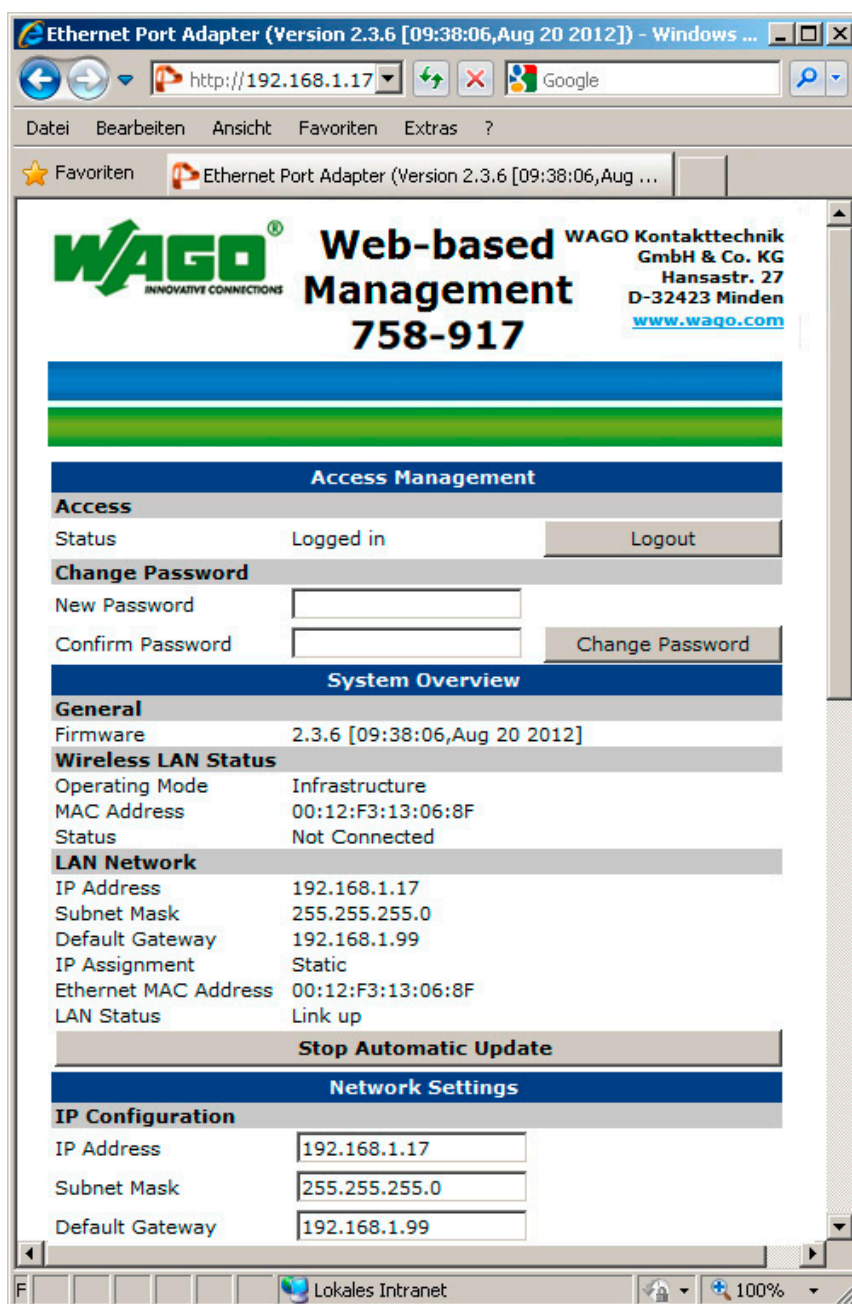


Figure 19: WBM main page after login

7.4.2 “Access Management” Section

You can enter or change the access password for protected device settings in this section.

Access Management	
Access	
Status	Logged in Logout
Change Password	
New Password	<input type="text"/>
Confirm Password	<input type="text"/> Change Password

Figure 20: WBM section “Access Management”

Change password

1. Enter the new password in the box **New Password**.
2. Enter the password again in the box **Confirm Password**.
3. Save the new password by clicking on [**Change Password**].

7.4.3 “System Overview” Section

General information about the device and the device status is displayed in this section.

System Overview	
General	
Firmware	2.3.6 [09:38:06, Aug 20 2012]
Wireless LAN Status	
Operating Mode	Ad-Hoc
MAC Address	00:12:F3:13:02:3E
Status	Connecting...
LAN Network	
IP Address	192.168.1.16
Subnet Mask	255.255.255.0
Default Gateway	192.168.1.99
IP Assignment	Static
Ethernet MAC Address	00:12:F3:13:02:3E
LAN Status	Link up
Stop Automatic Update	

Figure 21: WBM section “System Overview”

Table 17: WBM section “System Overview”

Parameter	Value (example)	Description
General		
Firmware	(“2.3.5”)	Display of the WEG firmware version
Wireless LAN Status		
Operating Mode	(“Infrastructure”)	Display of the network type
MAC Address	(“00:12:F3:12:FE:76”)	Display of the WLAN MAC address
Status	(“Not Connected”)	Display of the WLAN link status
LAN Network		
IP Address	(“192.168.1.99”)	Display of the WEG IP address
Subnet Mask	(“255.255.255.0”)	Display of the network mask
Default Gateway	(“192.168.1.99”)	Display of the gateway
IP Assignment	(“Static”)	Display of the IP assignment method
Ethernet MAC address	(“00:12:F3:0F:D6:1C”)	Display of the ETHERNET MAC address
LAN Status	(“Link up”)	Display of the LAN link status

Clicking the [Stop Automatic Update] or [Start Automatic Update] button respectively stops or starts automatic update of the information displayed.

7.4.4 “Network Settings” Section

You can perform network configuration in this section.

The screenshot shows the 'Network Settings' configuration page. It has a blue header with the title 'Network Settings'. Below the header, there is a section titled 'IP Configuration'. This section contains four rows of input fields: 'IP Address' with the value '192.168.1.16', 'Subnet Mask' with '255.255.255.0', 'Default Gateway' with '192.168.1.99', and 'IP Assignment' with a dropdown menu set to 'Static'. At the bottom of this section is a button labeled 'Write Network Settings'.

Figure 22: WBM section “Network Settings”



Note

Please note the interaction with other devices in the network!

Changes to the network settings of a device can affect other devices in the same network. An improper configuration, e.g., duplicate assignment of the same IP address, can cause devices to not work as intended. Therefore, always make sure that the configuration is correct especially when devices are configured to function as DHCP servers.

Table 18: WBM section “Network Settings > IP configuration”

Parameter	Value (example)	Description
IP configuration		
IP address	(“192.168.1.99”)	Input IP address for WEG
Subnet Mask	(“255.255.255.0”)	Input the network mask
Default gateway	(“192.168.1.99”)	Input the standard gateway
IP Assignment	“Static”	Deactivate DHCP, use static IP parameters
	“DHCP Client”	Obtain IP parameters from DHCP server
	“Static & DHCP Server”	Use own static IP address and activate DHCP server
	“Static & DHCP Relay”	Use own static IP address, forward DHCP queries to other devices
	“DHCP Client & DHCP Relay”	Obtain IP parameters from DHCP server, forward DHCP queries to other devices

Clicking the **[Write Network Settings]** button saves all settings of the **Network Settings** section.

Note



Use different IP addresses in network!

To rule out any IP address conflicts, all devices must use different IP addresses.

Note



Reset IP parameters without changing settings!

If you no longer know the IP address for your WEG you can reset the IP address for the WEG using the Mode membrane button without having to change other settings (see section “Configuration using the Mode Membrane Button” > “Overview of Autoconfiguration Procedures” > “3 – Resetting IP Parameters”).

7.4.5 “Wireless LAN Settings” Section

You can make changes in this section which affect the radio communications interface.

Figure 23: WBM section “Wireless LAN Settings”

Table 19: WBM section “Wireless LAN Settings > Network”

Parameter	Value (example)	Description
Wireless LAN Network		
Network Name (SSID)	(“MySSID”)	Input of the network SSID to which a connection is to be established.

Clicking the **[Scan for Networks]** button scans for available WLAN networks. The SSIDs of any networks found appear in the dropdown menu above the button. Left-clicking on the SSID of any network found moves it from the list of the dropdown menu to the **Network Name (SSID)** field.

Table 20: WBM section "Wireless LAN Settings > General"

Parameter	Value (example)	Description
General		
Operating Mode	"Infrastructure"	A link to an infrastructure network managed by an access point can be established.
	"Ad-Hoc"	A link to an ad-hoc network can be established.
Channel	"0 (Auto)"	The radio channel is automatically selected.
	36 to 140	The radio channel set manually is used.
Channel List		Reserved for future use.
Data Rate	"0 (Auto)"	Data is transferred automatically at the highest possible data rate.
	1 to 58,5 Mbit/s	The data transfer rate cannot exceed the value set manually.
Transmit Power	-17 to +17 dBm	The transmit power cannot exceed the value set manually.

Table 21: WBM section "Wireless LAN Settings > Security"

Parameter	Value (example)	Description
Security		
Security Mode	"WPA2-PSK (AES)"	Use WPA2-PSK (AES) security mode. The same passkey must be used for all devices in the radio network.
	"WPA-PSK (TKIP)"	Use WPA-PSK (TKIP) security mode. The same passkey must be used for all devices in the radio network.
	"WPA2-PEAP"	Use WPA2-PEAP security mode. Valid entries for User Name, Domain, Certificate Fingerprint and Password must be entered.
	"None"	Use unsecured radio connection.
	"Other"	Use user-defined security settings.

Note



Entering special characters using a leading "\\".

In individual cases, a passkey can also include special characters not available on the keyboard used. To enter such characters, use a backslash ("\") followed by the hexadecimal ASCII numerical code of the required character.

Example: The character string "123" corresponds to the ASCII numerical code 0x31, 0x32, 0x33. "\31\32\33" could also be entered instead of "123".

Table 22: WBM section “Wireless LAN Settings > Client Mode”

Parameter	Value (example)	Description
Client Mode		
Mode	“Ethernet Bridge”	The device is set up for a bridge connection. Multiple subscribers of the connected LAN can use the radio link.
	“Multi-Client”	The device is set up for a direct connection. Only one subscriber of the connected LAN can use the radio link for transmitting any ETHERNET telegrams. A limited number of other LAN subscribers can use the radio link to transmit IP telegrams.
	“Client”	The device is set up for a direct connection. Only one subscriber of the connected LAN can use the radio link.
Found MAC Addresses	(“00:24:73:9E:A3:C8”)	(only when Mode setting equals “Multi-Client” or “Client”) Dropdown menu that lists ETHERNET MAC addresses of subscribers recognized in the connected LAN. By left-clicking on a list entry, it is applied as the WLAN MAC Address setting.
WLAN MAC Address	(“00:24:73:9E:A3:C8”)	(only when Mode setting equals “Multi-Client” or “Client”) ETHERNET MAC address of the subscriber of the connected LAN that can use the radio link without restriction.
IP Address	(“192.168.1.100”)	(only when Mode setting equals “Ethernet Bridge”) IP address of the device that forms the other endpoint of the ETHERNET bridge.
UDP Port	(“0”)	(only when Mode setting equals “Ethernet Bridge”) UDP port used to exchange administrative data with the device that forms the other endpoint of the ETHERNET bridge. This setting must be identical on both endpoints.

The [Scan MAC Addresses] button only appears when the **Mode** setting equals “Multi-Client” or “Client”. Click this button to scan for ETHERNET devices in the connected LAN. The MAC addresses of any ETHERNET devices found are listed in the **Found MAC Addresses** dropdown menu.

Clicking the [Write Wireless LAN Settings] button saves all settings of the **Wireless LAN Settings** section.

7.4.6 “Miscellaneous” Section

You can define special settings in this section.

The screenshot shows the 'Miscellaneous' section of the WBM interface. It is divided into several sections:

- Read/Write all Settings:** Contains two buttons: 'Read all Settings' and 'Write all Settings'.
- SMART Modes:** Features a dropdown menu currently set to '4 - Wait for Automatic Configuration'. Below it is a detailed description of this mode: '4 - Wait for Automatic Configuration: The device will wait for a connection from a device set in "Initiate Automatic Configuration (mode 5)". When a connection is detected a new SSID and WEP key will be created and a UDP tunnel connection to the connecting device will be set. This device will get the IP address 192.168.1.99.' An 'Execute' button is located to the right of the text.
- AT-Commands:** Includes a text input field for 'Send AT Command' and four buttons: 'Send AT Command', 'Reboot Device', 'Restore Device', and 'Show AT Commands'.
- Configuration:** Contains a search button labeled 'Durchsuchen...' and a 'Load Configuration' button.
- Firmware Update:** Includes input fields for 'TFTP Server IP Address' and 'File Name', along with an 'Update Firmware' button.

Figure 24: WBM section “Miscellaneous”

By clicking the **[Read all Settings]** button, the WEG reads all parameters displayed on the WBM page again. Any changes made in the WBM that have not been saved are lost.

By clicking the **[Write all Settings]** button, all parameters displayed on the WBM page are written to the WEG. Some changes to parameters only take effect after the WEG is rebooted.

By clicking the **[Execute]** button, the autoconfiguration procedure selected in the dropdown menu under the **SMART Modes** section is started (see also section “Configuration Using the Mode Membrane Button”).

The device is rebooted by clicking the **[Reboot Device]** button. Any settings not saved are lost. After completing the reboot, the password must be entered again before continuing with the configuration.

The device is reset to factory settings by clicking the **[Restore Device]** button. Any settings not saved are lost. After completing the reboot, the password must be entered again before continuing with the configuration.

The **Configuration** and **Firmware Update** sections are reserved for later use. The use of AT commands is described in the section “Execution of AT Commands” in detail.

7.4.6.1 Execution of AT Commands

Reading or writing of parameters for the WBM is mapped internally by execution of AT commands. These commands are automatically sent to the WEG by pressing buttons in the WBM. The command last sent via the WBM and the response from the device appear in the “AT Commands” text box on the left side. In addition, a longer history of any AT commands sent and responses received can also be displayed. Click **[Show AT Commands]** to display an “AT Commands:” text box on the right side or click **[Hide AT Commands]** to hide the text box.

WBM control elements are available for configuring all common device settings. However, certain advanced settings can only be made by manually executing AT commands.

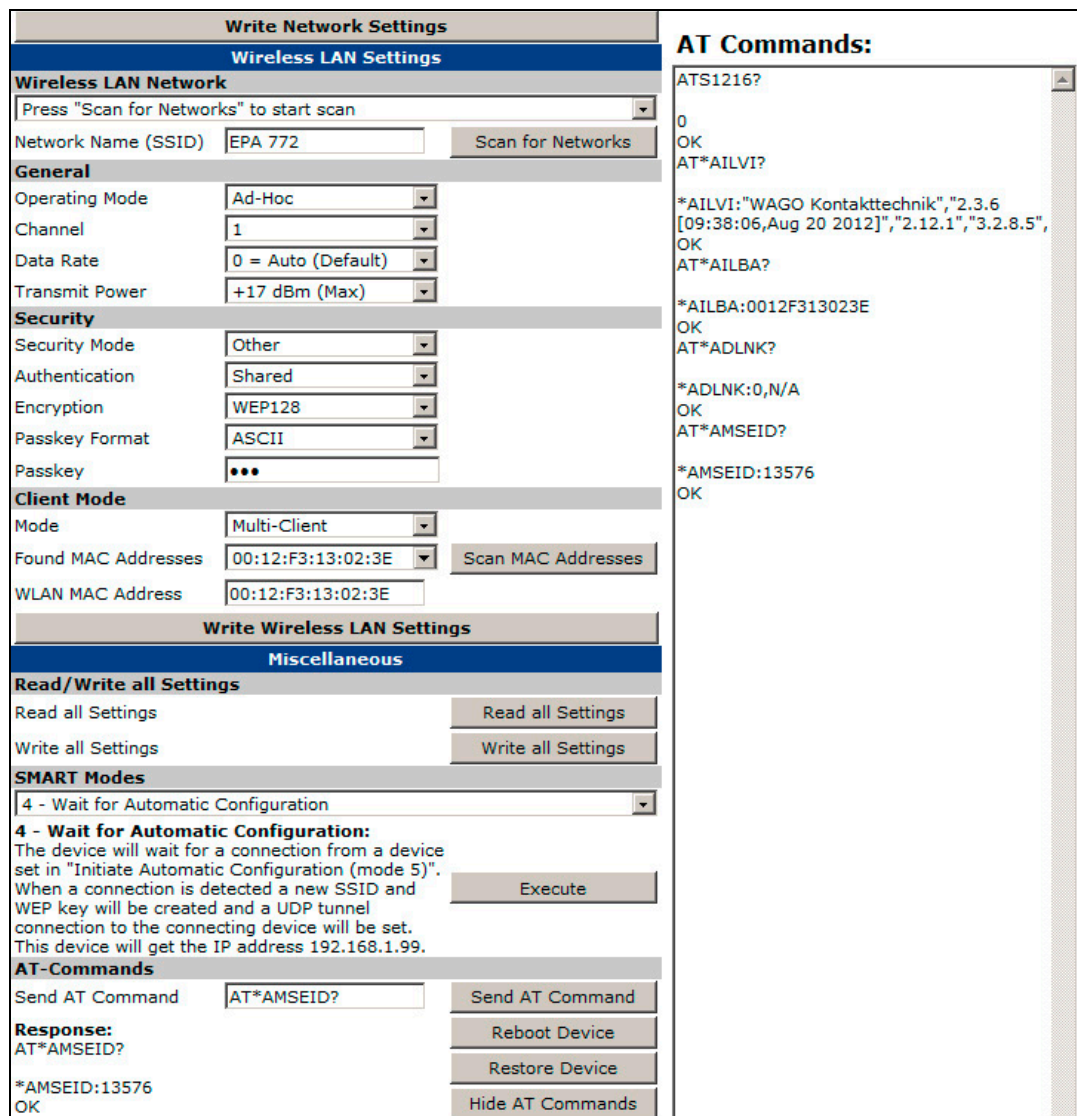


Figure 25: Text area “AT Commands”

To define an AT command, enter the AT command in the **Send AT Command** field. Writing commands are concluded with "**=<v>**", with "**<v>**" indicating the value to be written. Read commands end with "**?**".

An example of write access could be “**ATS1216=0**”, an example of read access “**ATS1217?**”.

When the command has been executed, the WEG replies with "OK", followed by data (for read-only access). If the command fails, "ERROR" is signaled.

Table 23: AT Commands

AT Command	Description
AT&F	Reset the WEG to the factory default settings. There is no distinction drawn between read and write access for this command, nor does it possess any parameters.
ATS<n>? ATS<n>=<v>	Query or write the current value from the S register <n> . <n> = 1216: TRIGGER_PUSH procedure: Defines which procedure is triggered for the TRIGGER_PUSH event. Possible settings: 0: Shut down and reestablish radio link 1: Switch ON/OFF all LEDs 2: Reboot device <n> = 1217: TRIGGER_HOLD procedure: Defines which procedure is triggered for the TRIGGER_HOLD event. Possible settings: 0: Shut down and reestablish radio link 1: Switch ON/OFF all LEDs 2: Reboot device
AT*AMGD? AT*AMGD=<data>	Up to 31 bytes of any user-specific data <data> can be stored in the WEG. This data is permanently stored and is also available after a restart.

8 Appendix

8.1 Sample Configurations

8.1.1 Preparation



Note

Reset the WEG prior to the sample configuration!

Always perform the following steps for the sample configuration for all WEGs involved to reset the WEGs to the factory default settings.

1. Connect the WEG to the power supply. If power is already applied, disconnect it briefly and then re-activate power supply to the device.
2. **Within 5 seconds after connecting power** press Mode membrane button.

The “A” LED lights up and the Configuration mode is active.

3. Press the Mode membrane button **1 x** to select autoconfiguration procedure 2 (“Reset to Factory Default Settings”).

LED “B” lights up.

4. Press and hold the Mode membrane button for **at least 2 seconds** until LED “B” goes out.

The WEG has now been reset to the factory default settings.

8.1.2 Bridge Connection, without Access Point

Two WEGs make it easy to link two LAN segments, which each contain one or more LAN devices. The WEGs must be configured, so that they form a bridge connection in the ad-hoc operating mode.

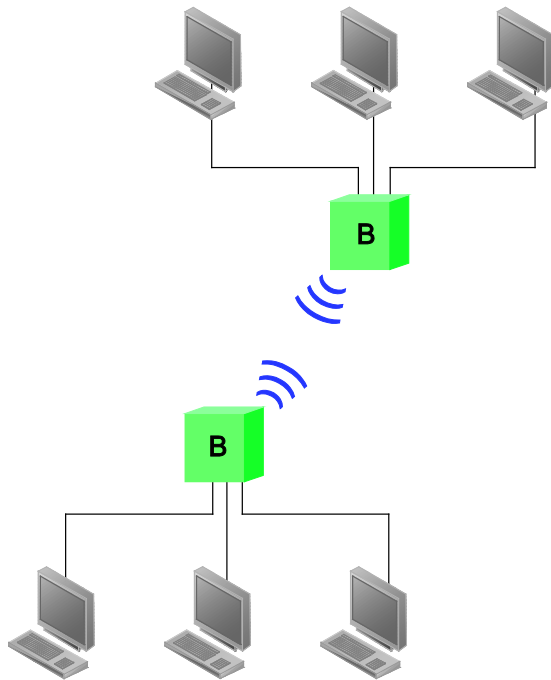


Figure 26: Bridge Connection, without Access Point

Every ETHERNET device of both LAN segments can communicate with every other ETHERNET device in this scenario. The easiest way to conduct this configuration is to activate the associated autoconfiguration procedure using the Mode membrane button.

Note



Configuration changes the IP settings!

Please note that the configuration described below will also change the IP configuration of the devices (see Section “Configuration using the Mode Membrane Button”).

Upon conclusion of the autoconfiguration, the Web-based Management System of each WEG can be accessed under the new IP configuration.

8.1.2.1 Configuration of the 1st WEG Using the Mode Membrane Button

1. Activate the Configuration mode by pressing the Mode membrane button **1 x** within **5 s after restarting** the device.
(If an extended period of time has passed since the last restart, disconnect the power from the device, reconnect it and then press the Mode membrane button.)

The “A” LED lights up and the Configuration mode is active.

2. Press the Mode membrane button **3 x**.

LED “C” lights up.

3. Press and hold the Mode membrane button for **at least 2 seconds** until LED “C” begins flashing.

This WEG is now in the operating mode “Wait for automatic configuration”, which remains active for about 5 minutes.

8.1.2.2 Configuration of the 2nd WEG Using the Mode Membrane Button

1. Activate the Configuration mode by pressing the Mode membrane button **1 x** within **5 s after restarting** the device.
(If an extended period of time has passed since the last restart, disconnect the power from the device, reconnect it and then press the Mode membrane button.)

The “A” LED lights up and the Configuration mode is active.

2. In the Configuration mode press the Mode membrane button **4 x**.

The “A” and “C” LEDs light up.

3. Press and hold the Mode membrane button for **at least 2 seconds** until LED “A” and “C” begin flashing.

The WEG now attempts to set up a link to the 1st WEG.

Once this link has been established successfully, the 2nd WEG will configure the 1st WEG.

Both devices then carry out a restart and re-establish a wireless link automatically. Successful autoconfiguration and establishing of a wireless link is indicated by the permanently lit blue link LED “((()))” on the top of both devices.

8.1.2.3 Configuration of the WEGs Using WBM

As an alternative to using the Mode membrane button, the WBM can also be used to configure a bridge connection without access point. However, it typically takes longer to adjust settings as required. For example, it may be necessary to select the IP addresses of the WEG manually to avoid IP address conflicts.

Configure the 1st WEG by logging into the WBM and choosing your settings according to the table below.

Table 24: Bridge connection, settings for 1st WEG

Parameter	Value
Network Settings > IP Address	Any unique IP address in the planned network, e.g., “192.168.1.110”
Network Settings > Subnet Mask	Any subnet mask, e.g., “255.255.255.0”
Network Settings > IP Assignment	“Static”
Wireless LAN Settings > Network Name (SSID)	Any SSID. This setting must be identical for both WEGs.

Table 24: Bridge connection, settings for 1st WEG

Parameter	Value
Wireless LAN Settings > Operating Mode	“Ad-Hoc”
Wireless LAN Settings > Channel	Any channel. This setting must be identical for both WEGs.
Wireless LAN Settings > Security (multiple parameters)	Any settings identical for both WEGs. Additional parameter may need to be configured depending on the Security Mode settings. Security Mode “WEP128” and selection of a secure passkey is recommended.
Wireless LAN Settings > Mode	“ETHERNET Bridge”
Wireless LAN Settings > IP Address	IP address of the 2nd WEG
Wireless LAN Settings > UDP Port	Any setting identical for both WEGs, e.g., “7”

Configure the 2nd WEG by logging into the WBM and choosing your settings according to the table below.

Table 25: Bridge connection, settings for 2nd WEG

Parameter	Value
Network Settings > IP Address	Any unique IP address in the planned network, e.g., “192.168.1.111”
Network Settings > Subnet Mask	Same as the setting for the 1st WEG
Network Settings > IP Assignment	Same as the setting for the 1st WEG
Wireless LAN Settings > Network Name (SSID)	Same as the setting for the 1st WEG
Wireless LAN Settings > Operating Mode	Same as the setting for the 1st WEG
Wireless LAN Settings > Channel	Same as the setting for the 1st WEG
Wireless LAN Settings > Security (multiple parameters)	Same as the setting for the 1st WEG
Wireless LAN Settings > Mode	Same as the setting for the 1st WEG
Wireless LAN Settings > IP Address	IP address of the 1st WEG
Wireless LAN Settings > UDP Port	Same as the setting for the 1st WEG

8.1.3 Bridge Connection, with Access Point

An access point can also be used to establish a bridge connection between WEGs.

A distinction should be made between two cases:

1. WEGs and access point are only connected to each other wirelessly.
2. There is a cable connection between a WEG and the access point.

8.1.3.1 WEGs and Access Point wirelessly connected

This scenario is similar to a bridge connection without access point. Both ETHERNET segments, in which the WEGs are located, are connected to each other by the bridge connection. If the access point is in a third ETHERNET segment, then this is not included here, i.e. ETHERNET devices connected to the access point by cable cannot communicate with devices of the two ETHERNET segments connected by the bridge connection.

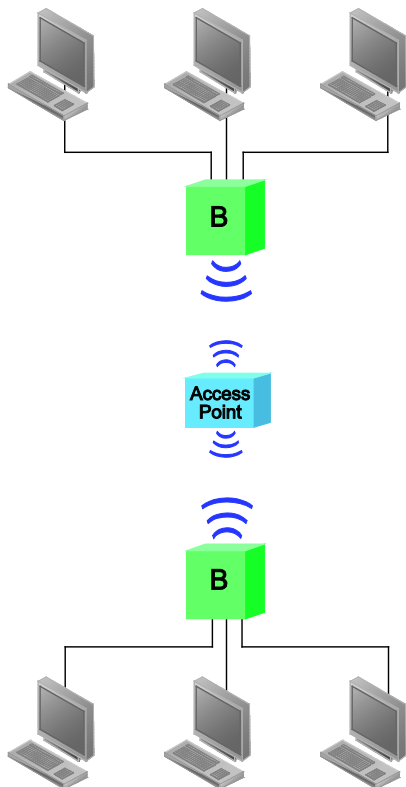


Figure 27: Bridge connection, connected wirelessly with access point

Configure the 1st WEG by logging into the WBM and choosing your settings according to the table below.

Table 26: Bridge connection via access point, settings for 1st WEG

Parameter	Value
Network Settings > IP Address	Any unique IP address in the planned network, e.g., "192.168.1.110"
Network Settings > Subnet Mask	Any subnet mask, e.g., "255.255.255.0"
Network Settings > IP Assignment	"Static"
Wireless LAN Settings > Network Name (SSID)	SSID of the access point.
Wireless LAN Settings > Operating Mode	"Infrastructure"
Wireless LAN Settings > Channel	"0 = Auto (Default)"
Wireless LAN Settings > Security (multiple parameters)	Security settings of the access point
Wireless LAN Settings > Mode	"ETHERNET Bridge"
Wireless LAN Settings > IP Address	IP address of the 2nd WEG
Wireless LAN Settings > UDP Port	Any setting identical for both WEGs, e.g., "7"

Configure the 2nd WEG by logging into the WBM and choosing your settings according to the table below.

Table 27: Bridge connection via access point, settings for 2nd WEG

Parameter	Value
Network Settings > IP Address	Any unique IP address in the planned network, e.g., "192.168.1.111"
Network Settings > Subnet Mask	Same as the setting for the 1st WEG
Network Settings > IP Assignment	Same as the setting for the 1st WEG
Wireless LAN Settings > Network Name (SSID)	Same as the setting for the 1st WEG
Wireless LAN Settings > Operating Mode	Same as the setting for the 1st WEG
Wireless LAN Settings > Channel	Same as the setting for the 1st WEG
Wireless LAN Settings > Security (multiple parameters)	Same as the setting for the 1st WEG
Wireless LAN Settings > Mode	Same as the setting for the 1st WEG
Wireless LAN Settings > IP Address	IP address of the 1st WEG
Wireless LAN Settings > UDP Port	Same as the setting for the 1st WEG

8.1.3.2 Cable Connection between WEG and Access Point

In this scenario, a WEG is in the same ETHERNET segment as the access point and can communicate with it via cable connection. Therefore, the other WEG only needs to be configured to establish a radio link.

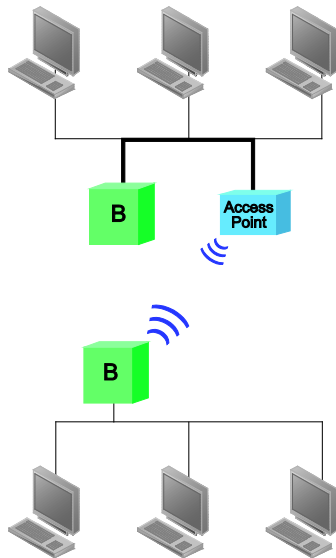


Figure 28: Bridge connection, cable connection with access point

Configure the WEG in the ETHERNET segment of the access point by logging into the WBM and choosing your settings according to the table below.

Table 28: Bridge connection, settings for wired WEG

Parameter	Value
Network Settings > IP Address	Any unique IP address in the planned network, e.g., "192.168.1.110"
Network Settings > Subnet Mask	Any subnet mask, e.g., "255.255.255.0"
Network Settings > IP Assignment	"Static"
Wireless LAN Settings > Network Name (SSID)	(empty)
Wireless LAN Settings > Operating Mode	(any)
Wireless LAN Settings > Channel	(any)
Wireless LAN Settings > Security (multiple parameters)	(any)
Wireless LAN Settings > Mode	"ETHERNET Bridge"
Wireless LAN Settings > IP Address	IP address of the 2nd WEG
Wireless LAN Settings > UDP Port	Any setting identical for both WEGs, e.g., "7"

Configure the other WEG by logging into the WBM and choosing your settings according to the table below.

Table 29: Bridge connection, settings for the WEG without cable connection

Parameter	Value
Network Settings > IP Address	Any unique IP address in the planned network, e.g., "192.168.1.111"
Network Settings > Subnet Mask	Same as the setting for the 1st WEG
Network Settings > IP Assignment	Same as the setting for the 1st WEG
Wireless LAN Settings > Network Name (SSID)	SSID of the access point.
Wireless LAN Settings > Operating Mode	"Infrastructure"
Wireless LAN Settings > Channel	"0 = Auto (Default)"
Wireless LAN Settings > Security (multiple parameters)	Security settings of the access point
Wireless LAN Settings > Mode	Same as the setting for the 1st WEG
Wireless LAN Settings > IP Address	IP address of the 1st WEG
Wireless LAN Settings > UDP Port	Same as the setting for the 1st WEG

8.1.4 Direct Connection, without Access Point

WEGs can be used to connect several LAN devices in an ad-hoc WLAN. If one WEG is connected per LAN device, the WEGs can be configured for direct connection. In this scenario, all LAN devices integrated in the WLAN via WEG can communicate with each other and with any other WLAN subscribers.

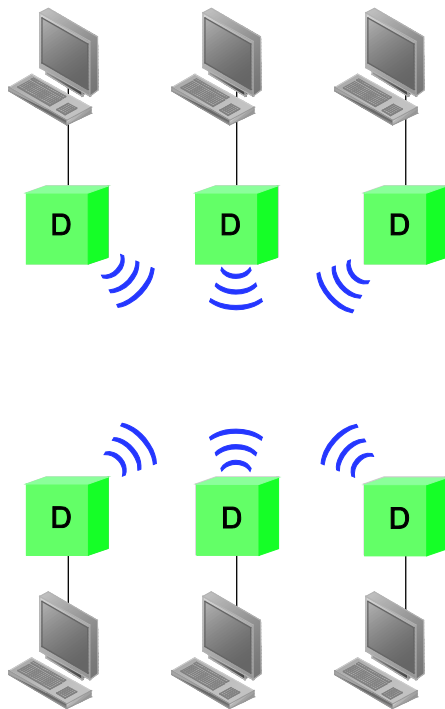


Figure 29: Direct Connection, without Access Point

To implement this configuration, use the WBM to enter the settings described below for all WEGs.

Table 30: Direct connection, without access point, configuration

Parameter	Value
Network Settings > IP Address	Any unique IP address in the planned network, e.g., "192.168.1.110". This parameter is only required when IP Assignment is set to "Static".
Network Settings > Subnet Mask	Any subnet mask that covers the range of IP addresses of all devices in the planned network, e.g., "255.255.255.0"
Network Settings > IP Assignment	"Static" when the IP address is to be set manually. If a DHCP server is active in the network, "DHCP Client" or "DHCP Client & DHCP Relay" can be set instead.
Wireless LAN Settings > Network Name (SSID)	Any SSID identical for all WEGs
Wireless LAN Settings > Operating Mode	"Ad-Hoc"
Wireless LAN Settings > Channel	Any channel. This setting must be identical for all WEGs.
Wireless LAN Settings > Security (multiple parameters)	Any settings identical for all WEGs. Additional parameters may need to be configured depending on the Security Mode settings. Security Mode "WEP128" and selection of a secure passkey is recommended.
Wireless LAN Settings > Mode	"Client Mode"
Wireless LAN Settings > WLAN MAC Address	ETHERNET MAC address of the LAN device connected to the WEG directly

Additional devices can be easily added to the resulting WLAN. However, the more WLAN subscribers, the less bandwidth is available to each individual subscriber. This effect is less pronounced when the WLAN is managed by an access point.

8.1.5 Direct Connection, with Access Point

WEGs can be used to integrate LAN devices in a WLAN managed by an access point. If one WEG is connected per LAN device, the WEGs can be configured for direct connection. In this case, the WEG acts as a wireless adapter. When there is a radio link, the respective LAN device can communicate with all other LAN or WLAN devices in the network of the access point.

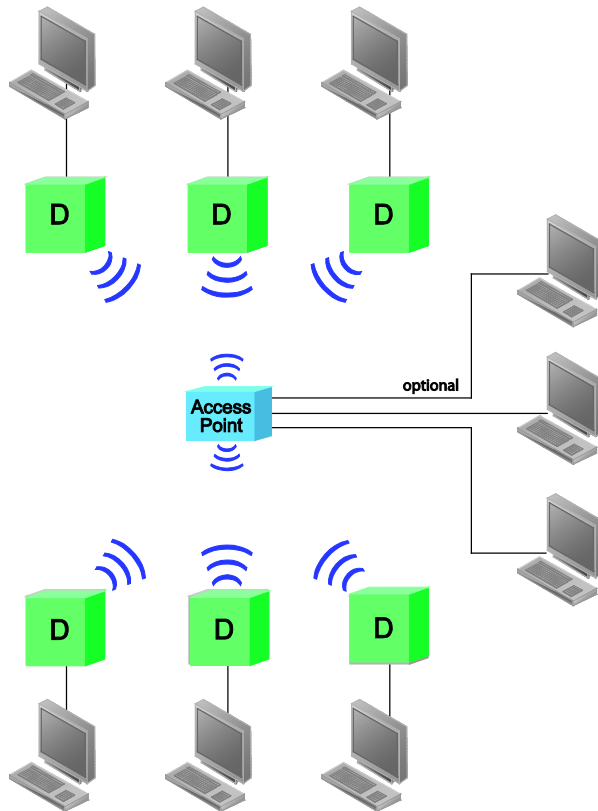


Figure 30: Direct Connection, with Access Point

To implement this configuration, use the WBM to enter the settings described below for each WEG used as a wireless adapter.

Table 31: Direct connection, with access point, configuration

Parameter	Value
Network Settings > IP Address	Any unique IP address in the planned network, e.g., "192.168.1.110". This parameter is only required when IP Assignment is set to "Static".
Network Settings > Subnet Mask	Any subnet mask that covers the range of IP addresses of all devices in the planned network, e.g., "255.255.255.0".
Network Settings > IP Assignment	"Static" when the IP address is to be set manually. If a DHCP server is active in the network, "DHCP Client" or "DHCP Client & DHCP Relay" can be set instead.
Wireless LAN Settings > Network Name (SSID)	SSID of the access point
Wireless LAN Settings > Operating Mode	"Infrastructure"
Wireless LAN Settings > Channel	"0 = Auto (Default)"
Wireless LAN Settings > Security (multiple parameters)	Security settings of the access point
Wireless LAN Settings > Mode	"Client Mode"
Wireless LAN Settings > WLAN MAC Address	ETHERNET MAC address of the LAN device connected to the WEG directly

8.2 Time Response

In automation applications, there may be data transmission time response requirements. If automation devices are not connected to each other directly by cable but indirectly via a communication system, it should first be checked if the transmission properties of the communication system are suitable for the application.

The time response can be characterized with the following parameters:

Table 32: Time Response Parameters

Parameter	Description
Latency	<p><u>Property of the communication system:</u> Time that the communication system needs to deliver a message from device A to device B.</p> <p><u>Application requirement:</u> Time it can take to transmit a message from A to B.</p>
Response time	<p><u>Property of the communication system:</u> Time that the communication system needs to deliver a message from device A to device B and to return a response message immediately generated by device B to device A.</p> <p><u>Application requirement:</u> Time permitted between sending a message and receiving a response.</p>
Cycle time	<p><u>Property of the communication system:</u> Time that the communication system needs after receiving a message from device A before it can accept another message for transmission.</p> <p><u>Application requirement:</u> Time after sending a message at which the next message can be sent.</p>

The transmission of data by radio changes the time response to the effect that latency, response and cycle time are higher compared to a direct cable connection.

A communication system is then suitable for an application without limitation when lower latency, response and cycle times than required by the application are guaranteed.

A communication system is conditionally suitable for an application when lower latency, response and cycle times than required by the application are normally possible.

The following table shows typical and maximum values for the time response that can be expected when using WEGs.

Table 33: Time Responses of the WEG

Parameter	Value
Latency, typical ¹⁾	2 ms
Response time, typical ¹⁾	3 ms
Cycle time, typical ¹⁾	2 ms
Latency, maximum ²⁾	20 ms
Response time, maximum ²⁾	40 ms
Cycle time, maximum ²⁾	20 ms

¹⁾ Typical: The specified time values are not exceeded in 99% of all messages sent.

²⁾ Maximum: The specified time values are not exceeded in 99.9% of all messages sent.

Note



Interference from other radio systems can worsen time responses!

Other radio systems that transmit data at the same time and frequency can significantly affect the time response. The time response described cannot be achieved when the frequency range used experiences interference over a longer period of time. Therefore, take suitable measures to optimize coexistence.

8.3 Data Rate

In general, communication systems can only communicate with limited bandwidth. Depending on the technology used, the configuration of the devices involved and external circumstances, the data rates for transmission are limited to specific values.

When using wireless communication systems, the following factors contribute to reducing the achievable data rate:

Table 34: Factors That Impact Data Rates

Factor	Description
No. of subscribers	The more communicating devices, the lower the bandwidth available for the individual device.
Signal quality	If the signal is weak or poor, modulation methods must be used that permit slow data rates, but a more stable connection.
Protocol efficiency	Depending on the protocol, administrative data must be transmitted in addition to user data. The proportion of user data in regards to the total volume of data to be transmitted is a measure for protocol efficiency.

The following table shows example values for the data rate to be expected when using WEGs in the configuration concerned.

Table 35: Maximum data rate, example values

Operating mode		Subscriber (Qty)	Signal quality	User data rate [Mbit/s]
LAN	WLAN			
Direct Connection	Infrastructure	1	Good	20
Direct Connection	Infrastructure	2	Good	10
Direct Connection	Ad-hoc	2	Good	5
Bridge Connection	Ad-hoc	2	Good	3
Direct Connection	Infrastructure	2	Poor	1
Direct Connection	Ad-hoc	2	Poor	1
Bridge Connection	Ad-hoc	2	Poor	0.5

8.4 Coexistence

A basic understanding of the significant influencing factors is required to optimize coexistence between different wireless technologies and/or devices. A brief description of the essential basics is therefore given below. These are followed by specific instructions for appropriate configuration of the WEG to conduct optimization of coexistence tailored to your particular application.

8.4.1 Basics

Interference occurs when signals of different transmitters collide in regards to frequency, location and time. This can cause one or all interfering radio transmissions to be interrupted. To minimize the risk of mutual interference, suitable coexistence measures must be taken. The following basic multiplex techniques are employed to ensure interference-free coexistence.

1. Time-Division Multiplex

Different devices must transmit simultaneously in order for a disturbance of two or more transmission signals to occur. At low traffic volumes, considerably more devices located near one another can be operated before a disturbance occurs.

2. Code Multiplex

Even if radio signals are transmitted at the same time at the same location and in the same frequency range, the signals can be differentiated and sorted out at the receiving device on the basis of the codes (or frequency splitting techniques) that are used.

3. Space-Division Multiplex

As wireless technologies may only operated with limited transmitting power in the ISM band, the transmitted signals become so weak at a certain distance that they no longer interfere with other devices.

4. Frequency-Division Multiplex

Radio signals that use clearly isolated frequencies do not interfere with one another.

Availability of the multiplexing techniques presented here to the user does, however, vary to substantially different degrees.

1, for example, is essentially determined by the communicating applications. Although consideration can be given in the development of the application to ensuring that only important data is transmitted and that there is no steep increase in data traffic under critical conditions in particular, the stipulated process-based limits are nevertheless always tight.

The method explained under **2** is employed automatically by the wireless technologies involved; options for adaptation by the user are not given and would not be practical in any event.

The techniques described under **3** and **4** can, on the other hand, be easily integrated in a frequency utilization plan. Spatial distribution of devices taking part in wireless communication can easily be planned. Taking into consideration

the structural conditions, in particular of fire protection walls or other “absorber” obstacles, mutual interference can be completely ruled out. Frequency-division multiplexing can be employed when clear, spatial separation is not possible. Some technologies even enable the user to specify set frequency ranges to allow them to be reserved exclusively for certain devices. Other technologies monitor the frequency band being used and automatically avoid ranges already experience intensive use.

8.4.2 Optimizing the Device Configuration

To minimize the risk of mutual interference between radio systems, make the following adjustments to the device configuration:

- If only a short distances has to be bridged within a radio system, limit the maximum transmit power.
- There should be as many walls or ceilings between the subscribers of different radio systems as possible while subscribers of the same radio system should be separated by as few structures as possible.
- Neighboring radio systems should use different frequency ranges when possible.

8.5 Range in Open Field

The maximum distance that can be overcome by a radio link is defined by the following factors:

1. Input Sensitivity

This denotes the capability of the device hardware to detect the radio signal transmitted by the remote device. The greater the sensitivity, the more weaker signals that can be received.

→ This is a permanent device property.

2. Transmitting Power

This denotes the signal strength which the device hardware outputs/can output for transmitting.

→ The maximum transmitting power for the WEG can be set as a parameter. Transmitting power should be set to the highest level for the maximum range.

3. Antenna Gain

This factor denotes the focusing or bundling properties of the antenna. An antenna with high antenna gain exhibits a strong alignment characteristic, i.e., depending on the antenna alignment, only highly amplified or extremely attenuated signals can be received.

→ The internal antenna of the WEG possesses an antenna gain of 5 dBi, meaning that the reception properties can be greatly influenced by correct alignment. Best results are achieved when the antenna (front side of device) is facing exactly in the direction from which the radio signals are being received.

4. Ambient Conditions

This factor deals with the physical environment/area around the wireless system. To achieve the maximum range a line-of-sight link should exist between the devices and there should be no objects present along the direct line-of-sight link within a specified radius (the so-called 1st Fresnel zone - see figure below). If this zone is even only partially blocked by any objects the achievable range can quickly be cut in half.

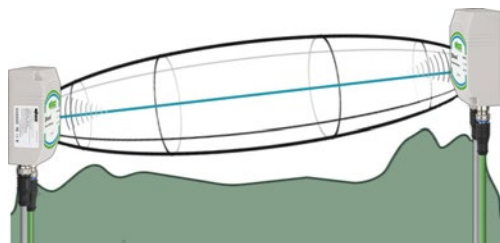


Figure 31: Fresnel zone

The shape of the 1st Fresnel zone is roughly an ellipse whose largest diameter (twice the radius of the 1st Fresnel zone) is at precisely half the distance.

The table below lists the radii that are to be kept clear:

Table 36: Radii to be kept clear

Distance	Radius for 1st Fresnel zone
100 m	1.7 m
200 m	2.5 m
300 m	3.0 m
400 m	3.5 m

Note



Range can be affected by other wireless systems!

Other range-influencing factors that are difficult to detect and rule out exist in the spurious irradiation from other wireless systems and/or in a temporal change of the radio channel, for example when the subscriber moves (swaying of the mast in strong wind), or other changes in ambient conditions (vehicles, movement of stored goods, pedestrians). These factors can make a precise prediction of the maximum range extremely difficult.

Note



Effective path of radio waves is more significant than the actual distance!

Overcoming of maximum distances for a line-of-sight link is a scenario completely different from use inside rooms or in the direct vicinity to competing wireless technologies. In these types of scenarios the decisive factor is frequently not the actual distance between the devices, but, rather, the effective path taken by the radio waves for multipath propagation, along with the actual interference present at the exact installation location. Under some circumstances, signal quality may even be enhanced by increasing the distance between the devices.

8.6 Data Security for Radio Transmission

It is often assumed that wireless communication systems are less secure than line-connected systems. When used and operated correctly, wireless systems offer at least an equivalent level of security.

The following conditions must apply before an unauthorized user can obtain access to data exchanged via wireless communication:

1. The attacker must be familiar with the communication system in use and be within the operating range of the system.
2. Radio transmission must take place without the use of any security mechanisms offered by this technology or the attacker must have adequate means to determine the security code.

To minimize security risks, choose the best security mechanisms available in the respective configuration such as:

- In an ad-hoc network, use “WEP128” encryption and choose the strongest passkey possible.
- In an infrastructure network in which various WLAN devices are used, use the “WPA2-PSK (AES)” security setting and choose the strongest passkey possible.

List of Figures

Figure 1: Wireless transmission between two WEGs	13
Figure 2: Infrastructure mode.....	14
Figure 3: Ad-hoc mode.....	14
Figure 4: View	16
Figure 5: Marking on front of device	17
Figure 6: Marking on bottom	17
Figure 7: Nameplate on back/side	17
Figure 8: Connections at bottom of device	18
Figure 9: Aligning the device.....	19
Figure 10: Antenna diagram 5.25 GHz – longitudinal axis	20
Figure 11: Antenna diagram 5.25 GHz – transverse axis.....	20
Figure 12: Display elements.....	21
Figure 13: Operating element.....	23
Figure 14: Drilled holes for attaching the WEG	29
Figure 15: Connecting the WEG	30
Figure 16: Mode membrane button and status LEDs.....	33
Figure 17: Flow chart	35
Figure 18: WBM main page before login	40
Figure 19: WBM main page after login	41
Figure 20: WBM section “Access Management”	42
Figure 21: WBM section “System Overview”	42
Figure 22: WBM section “Network Settings”	43
Figure 23: WBM section “Wireless LAN Settings”	45
Figure 24: WBM section “Miscellaneous”	48
Figure 25: Text area “AT Commands”	49
Figure 26: Bridge Connection, without Access Point	52
Figure 27: Bridge connection, connected wirelessly with access point	55
Figure 28: Bridge connection, cable connection with access point	58
Figure 29: Direct Connection, without Access Point	60
Figure 30: Direct Connection, with Access Point	62
Figure 31: Fresnel zone	69

List of Tables

Table 1: Revision History.....	5
Table 2: Number notation.....	8
Table 3: Font conventions	8
Table 4: Legend for the “View” figure	16
Table 5: Legend for the “Connections at bottom of device” figure	18
Table 6: Power supply, M12 Connector on Device	18
Table 7: System connection, M12 Socket on Device.....	18
Table 8: Legend for the “Display elements” figure	21
Table 9: Technical Data – General Device Data	24
Table 10: Technical Data – ETHERNET Interface.....	25
Table 11: Technical Data – Radio Interface.....	25
Table 12: Technical Data – Power Supply.....	25
Table 13: Selection of Installation Location	28
Tabelle 14: Default Settings	32
Table 15: Autoconfiguration Procedures	36
Table 16: Overwriting of Configuration	37
Table 17: WBM section “System Overview”	43
Table 18: WBM section “Network Settings > IP configuration”	44
Table 19: WBM section “Wireless LAN Settings > Network”	45
Table 20: WBM section “Wireless LAN Settings > General”	46
Table 21: WBM section “Wireless LAN Settings > Security”	46
Table 22: WBM section “Wireless LAN Settings > Client Mode”	47
Table 23: AT Commands	50
Table 24: Bridge connection, settings for 1st WEG.....	53
Table 25: Bridge connection, settings for 2nd WEG	54
Table 26: Bridge connection via access point, settings for 1st WEG	56
Table 27: Bridge connection via access point, settings for 2nd WEG	57
Table 28: Bridge connection, settings for wired WEG	58
Table 29: Bridge connection, settings for the WEG without cable connection	59
Table 30: Direct connection, without access point, configuration	61
Table 31: Direct connection, with access point, configuration	63
Table 32: Time Response Parameters	64
Table 33: Time Responses of the WEG	65
Table 34: Factors That Impact Data Rates	66
Table 35: Maximum data rate, example values.....	66
Table 36: Radii to be kept clear.....	70

WAGO Kontakttechnik GmbH & Co. KG
Postfach 2880 • D-32385 Minden
Hansastraße 27 • D-32423 Minden
Phone: +49/5 71/8 87 – 0
Fax: +49/5 71/8 87 – 1 69
E-Mail: info@wago.com
Internet: <http://www.wago.com>

