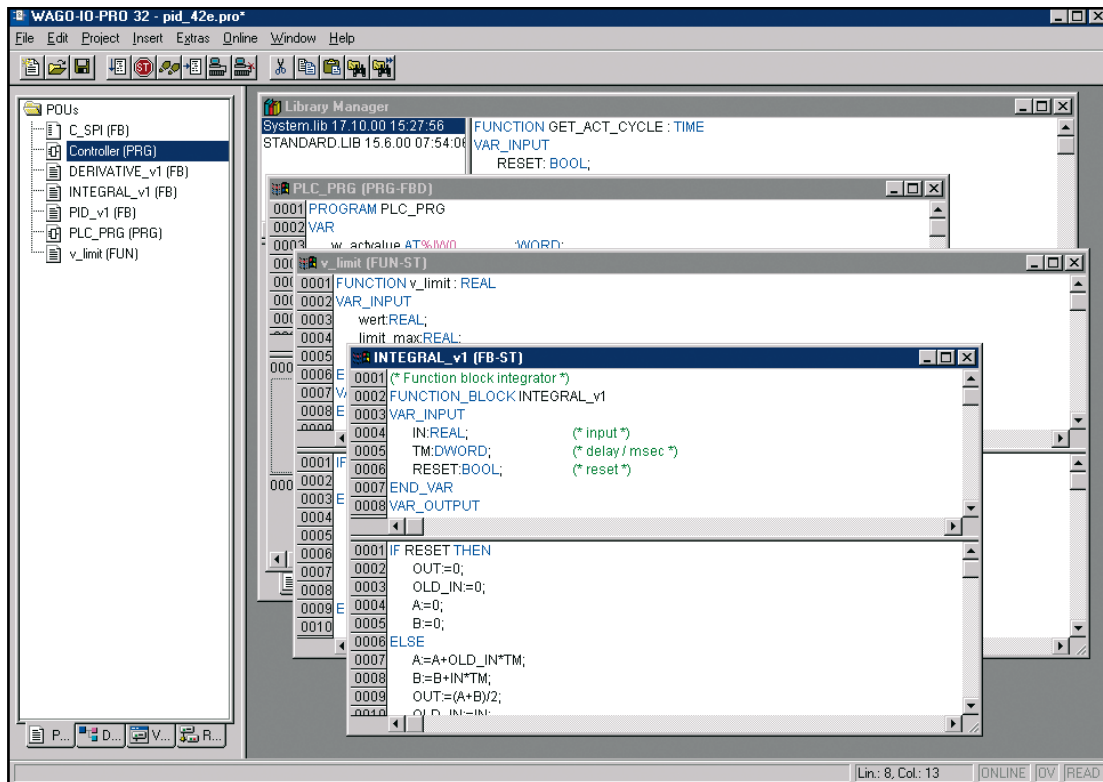


WAGO-I/O-PRO

Programming tool, IEC 61131-3 compatible



Description	Item-No.	Pack.-unit pcs																														
WAGO-I/O-PRO 32, German	759-332/000-001	1																														
WAGO-I/O-PRO 32, English	759-332/000-002	1																														
WAGO-I/O-PRO CAA	759-333	1																														
<p>WAGO-I/O-PRO is a programming and visualization tool, allowing users to develop PLC applications for the Programmable Fieldbus Controller of the WAGO-I/O-SYSTEM 750 Series.</p> <p>WAGO-I/O-PRO conforms to IEC 61131-3. This standard defines the requirements fulfilled by a programming system as well as 5 programming languages for PLCs. The languages IL, LD, FBD, ST, and FC are supported. For every automation task, the appropriate language can be chosen.</p> <p>The software meets the increasing requirements of control program development, for example re-usability or modularization.</p> <ul style="list-style-type: none"> • Powerful translation of the programming languages • Automatic declaration of variables • Librarian /Library maintenance <p>Furthermore, integrated test and diagnostic functions facilitate and speed up PLC working processes.</p> <ul style="list-style-type: none"> • Online status indication in the program code • Offline simulation • Integrated visual display of internal and external flags (markers) • Storage and graphic display of project variables <p>WAGO-I/O-PRO CAA not only programs the WAGO CoDeSys Automation Alliance products but also CoDeSys Automation Alliance products from other manufacturers.</p>	<h3>Technical Data</h3> <p>System requirements:</p> <table border="1"> <tr> <td>PC</td> <td>Pentium</td> </tr> <tr> <td>Operating system</td> <td>Microsoft® Windows 95® or higher Microsoft® Windows NT® 4.0</td> </tr> <tr> <td>RAM memory</td> <td>min. 16 MByte (Windows 95) min. 64 MByte (Windows NT)</td> </tr> <tr> <td>Hard disk storage</td> <td>10 MByte minimum</td> </tr> <tr> <td>CD ROM</td> <td></td> </tr> <tr> <td>Graphics card</td> <td>VGA or higher;</td> </tr> <tr> <td>Mouse</td> <td>required</td> </tr> <tr> <td>Other</td> <td>serial interface</td> </tr> </table> <p>Included</p> <table border="1"> <tr> <td>CD-ROM with software and documentation</td> </tr> <tr> <td>Communication cable</td> </tr> </table> <p>Windows® is a registered trademark of Microsoft Corporation</p> <h3>Approvals</h3> <table border="1"> <tr> <td>ABS (American Bureau of Shipping)</td> <td>03-HG3748601-PDA</td> </tr> <tr> <td>DNV (Det Norske Veritas)</td> <td>A-9334; Cl.B</td> </tr> <tr> <td>GL (Germanischer Lloyd)</td> <td>40 197-01 HH; cat. A, B, C, D (EMC 1)</td> </tr> <tr> <td>KR (Korean Register of Shipping)</td> <td>HMB05880-EL004</td> </tr> <tr> <td>NKK (Nippon Kaiji Kyokai)</td> <td>TA06190M</td> </tr> <tr> <td>RINA (Registro Italiano Navale)</td> <td>MAC30402CS1</td> </tr> </table>		PC	Pentium	Operating system	Microsoft® Windows 95® or higher Microsoft® Windows NT® 4.0	RAM memory	min. 16 MByte (Windows 95) min. 64 MByte (Windows NT)	Hard disk storage	10 MByte minimum	CD ROM		Graphics card	VGA or higher;	Mouse	required	Other	serial interface	CD-ROM with software and documentation	Communication cable	ABS (American Bureau of Shipping)	03-HG3748601-PDA	DNV (Det Norske Veritas)	A-9334; Cl.B	GL (Germanischer Lloyd)	40 197-01 HH; cat. A, B, C, D (EMC 1)	KR (Korean Register of Shipping)	HMB05880-EL004	NKK (Nippon Kaiji Kyokai)	TA06190M	RINA (Registro Italiano Navale)	MAC30402CS1
	PC	Pentium																														
	Operating system	Microsoft® Windows 95® or higher Microsoft® Windows NT® 4.0																														
	RAM memory	min. 16 MByte (Windows 95) min. 64 MByte (Windows NT)																														
	Hard disk storage	10 MByte minimum																														
	CD ROM																															
	Graphics card	VGA or higher;																														
	Mouse	required																														
	Other	serial interface																														
	CD-ROM with software and documentation																															
Communication cable																																
ABS (American Bureau of Shipping)	03-HG3748601-PDA																															
DNV (Det Norske Veritas)	A-9334; Cl.B																															
GL (Germanischer Lloyd)	40 197-01 HH; cat. A, B, C, D (EMC 1)																															
KR (Korean Register of Shipping)	HMB05880-EL004																															
NKK (Nippon Kaiji Kyokai)	TA06190M																															
RINA (Registro Italiano Navale)	MAC30402CS1																															