

---

**WAGO I/O SYSTEM 750**

**PROFIBUS WAGO I/O  
to Siemens Configuration  
for the SIMATIC 545-1104**

## **Application note**

A104000, English  
Version 1.0.0

Copyright © 2001 by WAGO Kontakttechnik GmbH  
All rights reserved.

**WAGO Kontakttechnik GmbH**

Hansastraße 27  
D-32423 Minden

Phone: +49 (0) 571/8 87 – 0

Fax: +49 (0) 571/8 87 – 1 69

E-Mail: [info@wago.com](mailto:info@wago.com)

Web: <http://www.wago.com>

**Technical Support**

Phone: +49 (0) 571/8 87 – 5 55

Fax: +49 (0) 571/8 87 – 4 30

E-Mail: [support@wago.com](mailto:support@wago.com)

Every conceivable measure has been taken to ensure the correctness and completeness of this documentation. However, as errors can never be fully excluded we would appreciate any information or ideas at any time.

We wish to point out that the software and hardware terms as well as the trademarks of companies used and/or mentioned in the present manual are generally trademark or patent protected.

---

# TABLE OF CONTENTS

<b>1</b>	<b>Important comments</b> .....	<b>1</b>
1.1	Legal principles.....	1
1.1.1	Copyright.....	1
1.1.2	Personnel qualification.....	1
1.1.3	Intended use.....	1
1.2	Range of validity.....	2
<b>2</b>	<b>Description</b> .....	<b>3</b>
<b>3</b>	<b>Reference material</b> .....	<b>3</b>
<b>4</b>	<b>Solution</b> .....	<b>3</b>
4.1	Use of COM ET 200 Software to configure WAGO I/O.....	3
4.2	SIMATIC 505-1104 Configuration.....	7



# 1 Important comments

To ensure fast installation and start-up of the units described in this manual, we strongly recommend that the following information and explanation is carefully read and adhered to.

## 1.1 Legal principles

### 1.1.1 Copyright

This manual is copyrighted, together with all figures and illustrations contained therein. Any use of this manual which infringes the copyright provisions stipulated herein, is not permitted. Reproduction, translation and electronic and photo-technical archiving and amendments require the written consent of WAGO Kontakttechnik GmbH. Non-observance will entail the right of claims for damages.

### 1.1.2 Personnel qualification

The use of the product detailed in this manual is exclusively geared to specialists having qualifications in PLC programming, electrical specialists or persons instructed by electrical specialists who are also familiar with the valid standards. WAGO Kontakttechnik GmbH declines all liability resulting from improper action and damage to WAGO products and third party products due to non-observance of the information contained in this manual.

### 1.1.3 Intended use

For each individual application, the components supplied are to work with a dedicated hardware and software configuration. Modifications are only admitted within the framework of the possibilities documented in the manuals. All other changes to the hardware and/or software and the non-conforming use of the components entail the exclusion of liability on part of WAGO Kontakttechnik GmbH.

Please direct any requirements pertaining to a modified and/or new hardware or software configuration directly to WAGO Kontakttechnik GmbH.

## 1.2 Range of validity

This application note is based on the stated hardware and software of the specific manufacturer as well as the correspondent documentation. This application note is therefore only valid for the described installation.

New hardware and software versions may need to be handled differently. Please note the detailed description in the specific manuals.

## 2 Description

Use of COM ET 200 Software to configure WAGO I/O

## 3 Reference material

**WAGO 750-301/302**(digital only) or **750-303/323**(12Mbaud version)  
**PROFIBUS** Fieldbus Coupler

**WAGO Input/Output Modules**

**WAGO 750-602/601** Supply Module

**WAGO 750-600** End Module

**Siemens COM ET 200 For Windows**(Rel.2.0 for SIMATIC 505 Support)

**WAGO Typefiles**- Copy into **COM ET 200** subdirectories: **typdat5x** and **bitmaps**.

**Siemens SIMATIC TISOFT 2 Rel. 6.01** Programming software

## 4 Solution

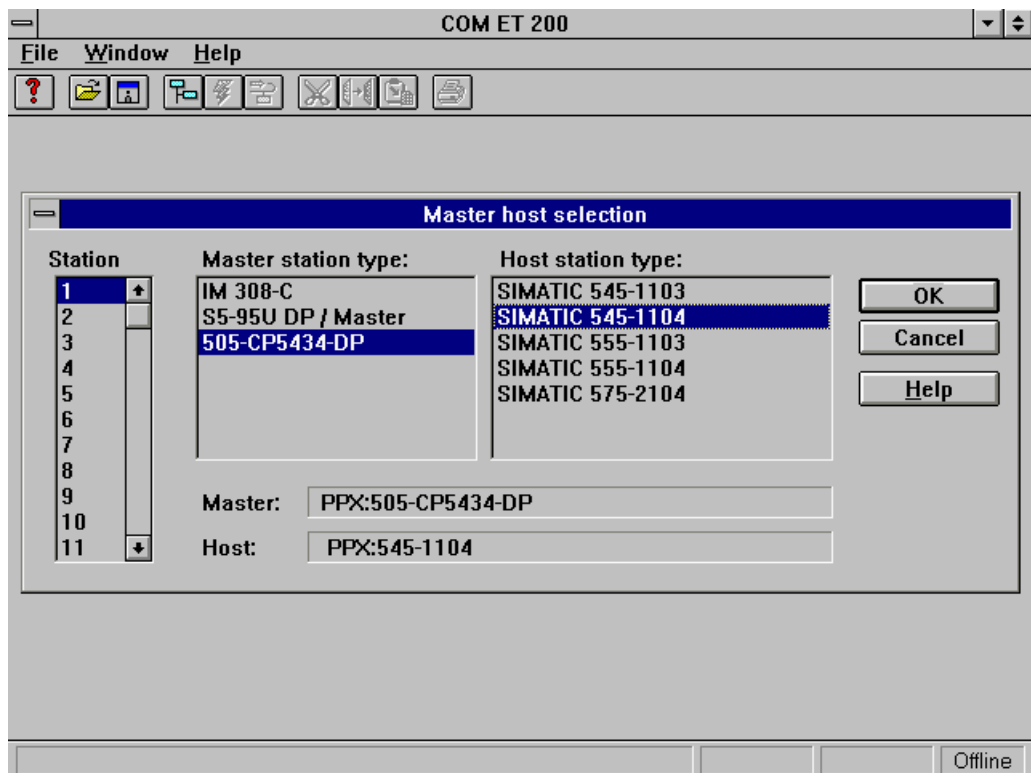
### 4.1 Use of COM ET 200 Software to configure WAGO I/O

**Rules**- Configure Analogs First, Outputs before Inputs.

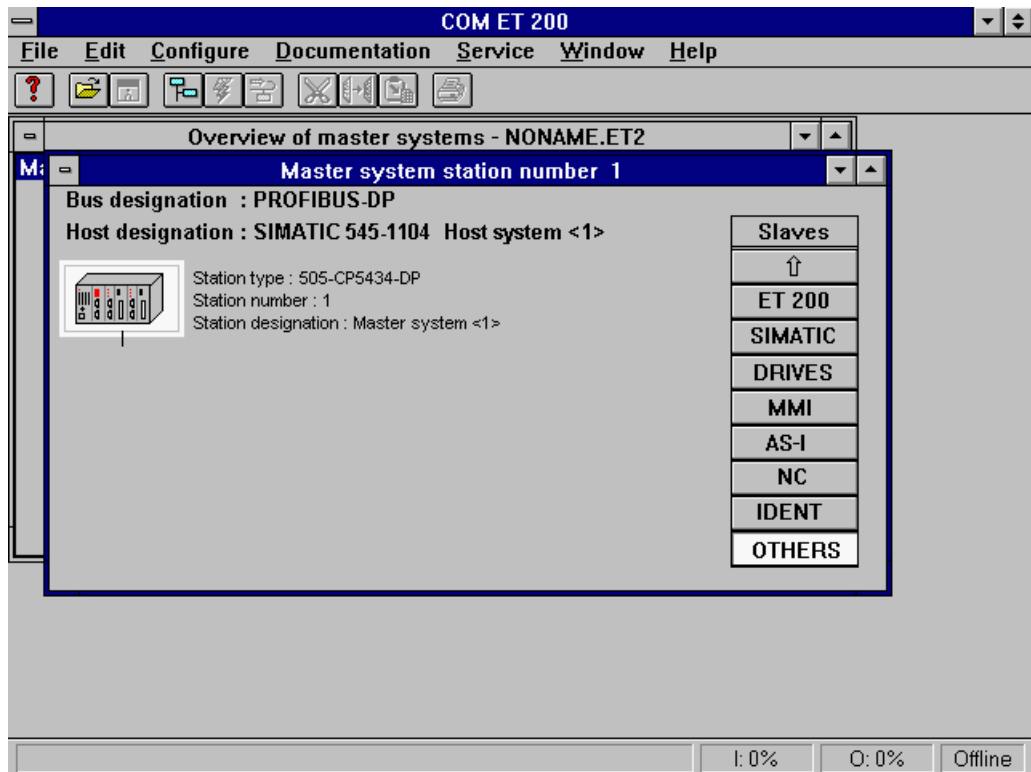
If necessary, use a 750-602 or -601, after the analog input modules to power the remaining digital modules.

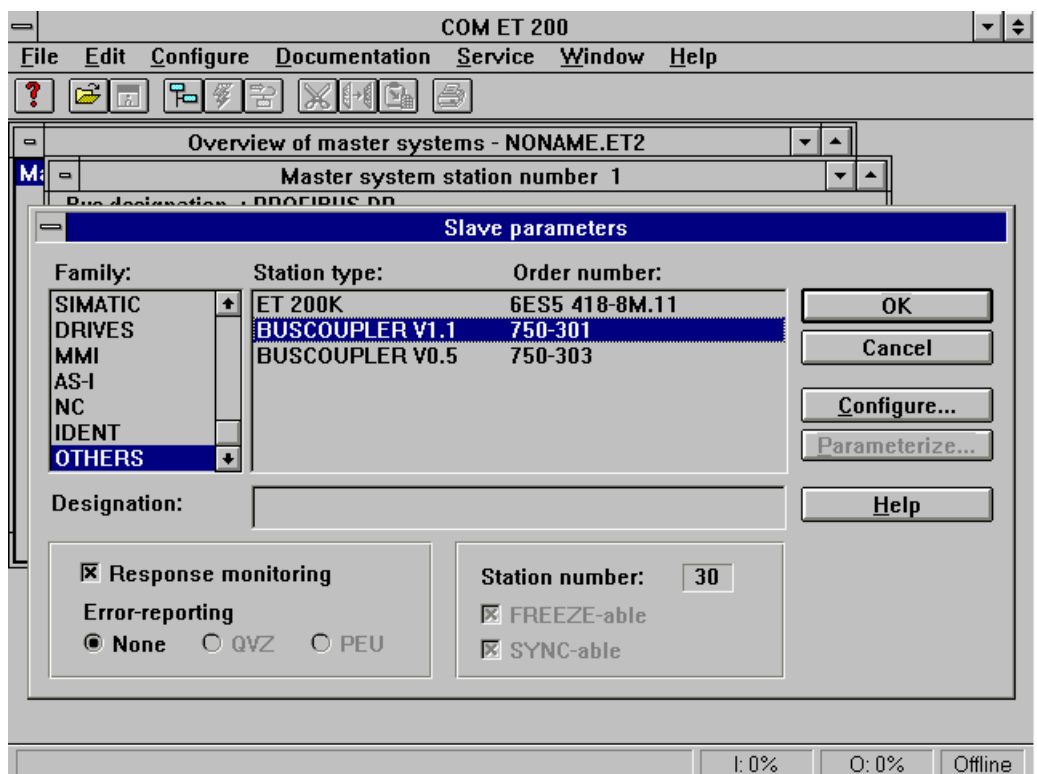
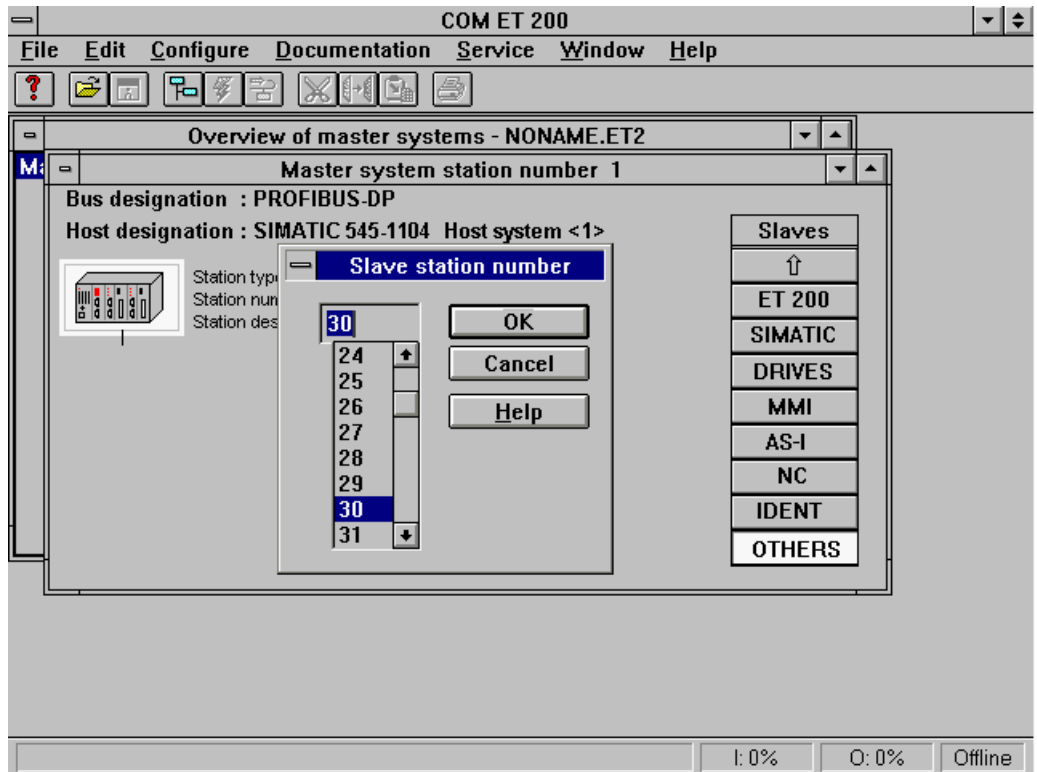
**COM ET 200**

1. Define Master Host- Station #, Type, Host.

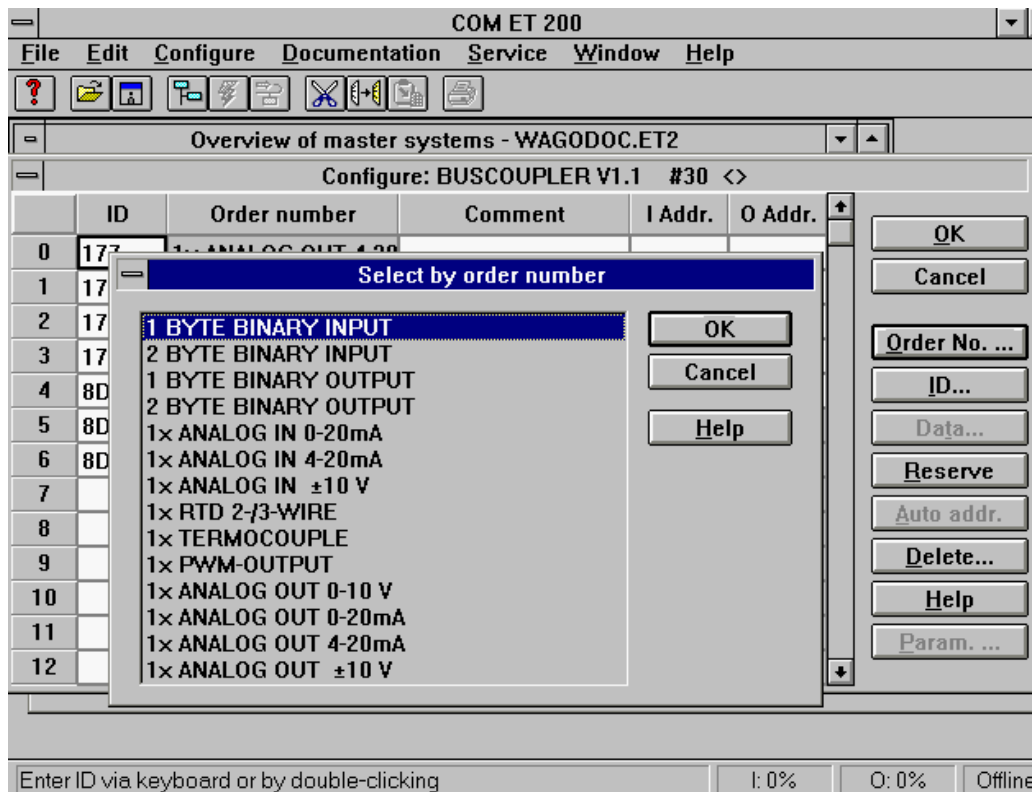


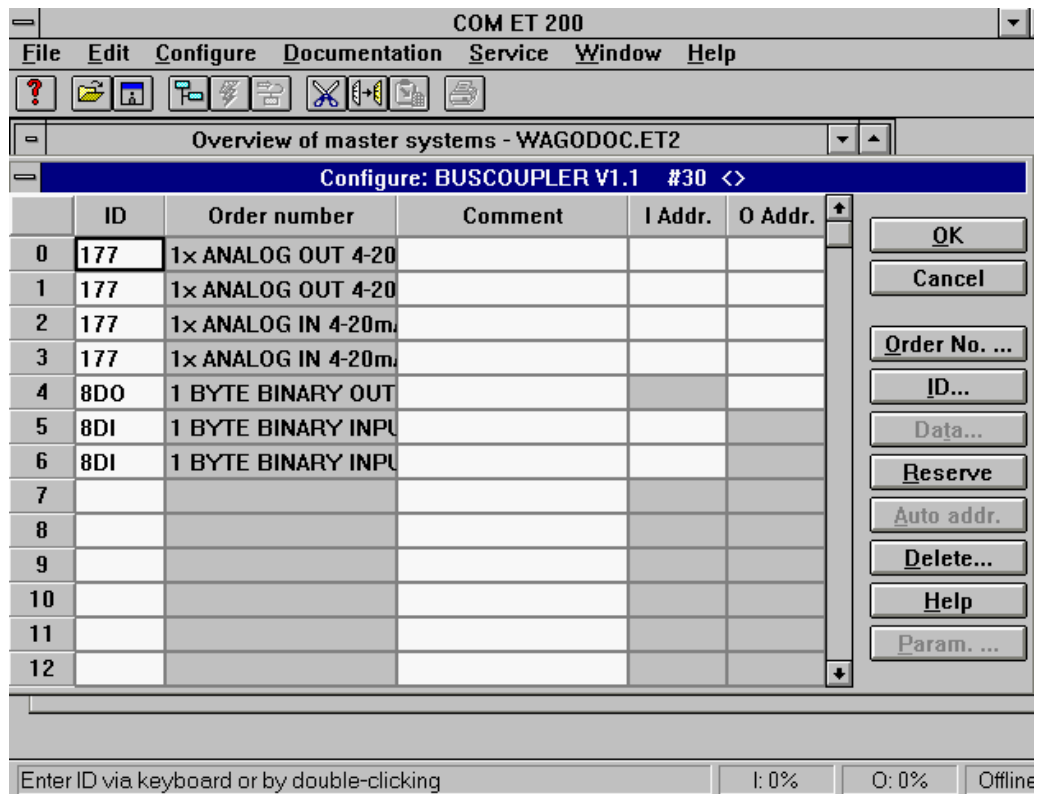
2. Add slave devices- For **WAGO I/O**, choose **OTHERS** and drag to **HOST**. Choose **Slave Station #**, select appropriate **BUSCOUPLER**, and select **Configure...** .





3. Use the **Order No. ...** button to configure installed modules (Analog and outputs first) highlight **ID** box to select **Slot #**. Use **177** for all Analog channels. Use **8DI** or **8DO** for Digital Input and Output modules, **note:** these definitions will cover **6** more channels, if a **2** channel module is used, therefore each digital module does not need to be defined.





4. Click **OK** to save, name and save file.

## 4.2 SIMATIC 505-1104 Configuration

1. Select File, Export, Binary file..., to export file for use in TISOFT 2 Rel. 6.01.
2. Go to TISOFT and access the Profibus DP I/O configuration. Choose MERGE and select the export file developed above.
3. Select CONFIG, UPDATE, and then EDIT to set the I/O address for each module.
4. Save settings to PLC and Disk. Exit back to I/O status screen.
5. The I/O should now be ONLINE.



WAGO Kontakttechnik GmbH  
Postfach 2880 • D-32385 Minden  
Hansastraße 27 • D-32423 Minden  
Telefon: 05 71/8 87 – 0  
Telefax: 05 71/8 87 – 1 69  
E-Mail: [info@wago.com](mailto:info@wago.com)

Internet: <http://www.wago.com>

---