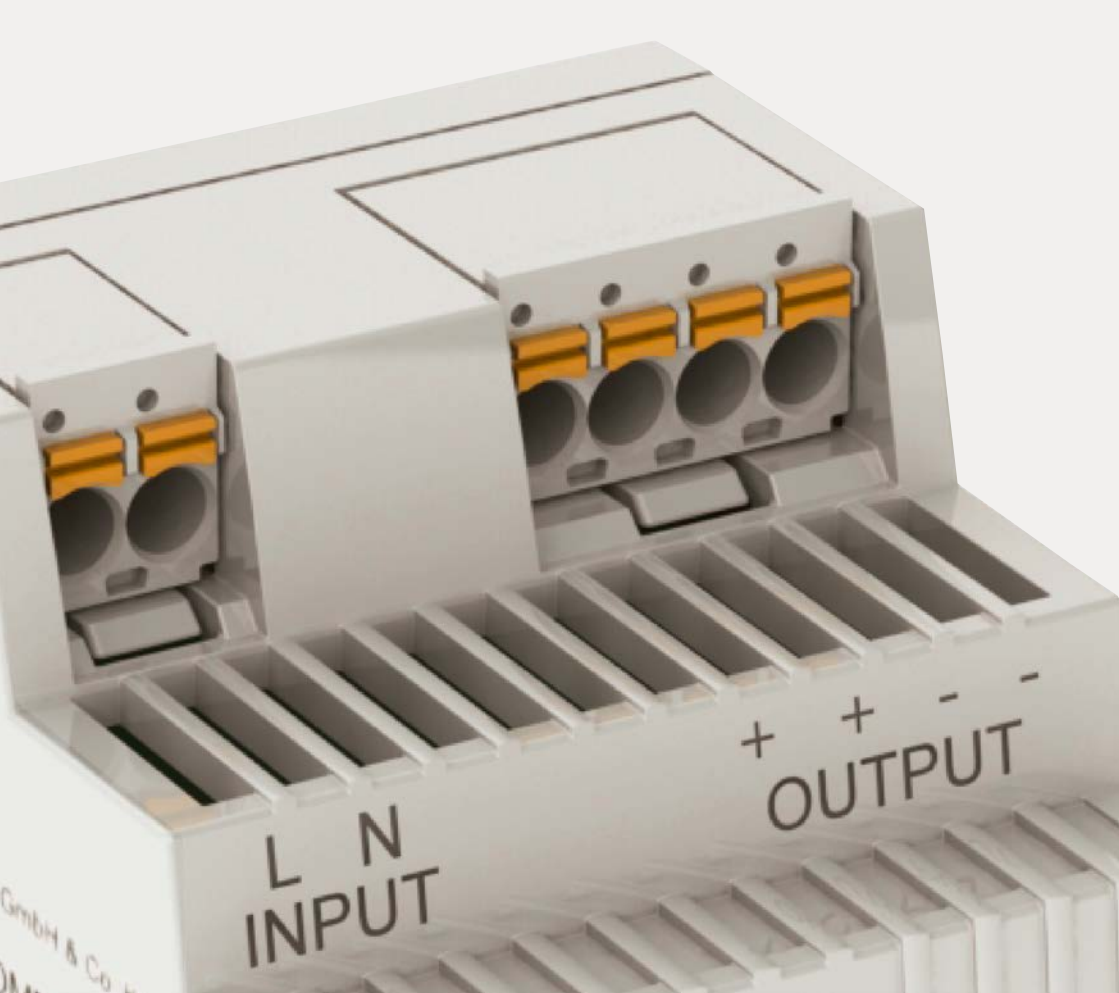




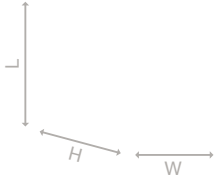
EPSITRON®

Advanced Power Supply System
Innovations



EPSITRON® COMPACT POWER

Technical Data



Item Number	787-1202	787-1212
Nominal input voltage	100 ... 240 VAC	100 ... 240 VAC
Input voltage range	90 ... 264 VAC 125 ... 375 VDC	90 ... 264 VAC 125 ... 375 VDC
Nominal output voltage, SELV	24 VDC	24 VDC
Output voltage range	22 ... 26 VDC	22 ... 26 VDC
Output current	1.3 A	2.5 A
Output power	30 W	60
Efficiency	87 % typ.	89 % typ.
LED indication	Green LED (DC OK)	Green LED (DC OK)
Ambient operating temperature	-25 °C ... +70 °C	-25 °C ... +70 °C
Dimensions (mm) W x H x L	54 x 56 x 90	72 x 56 x 90
Height from upper-edge of DIN-rail		



1) Easy to Connect

- CAGE CLAMP® connection technology – vibration-proof, fast, maintenance-free
- Pre-assembly via pluggable *picoMAX*® connection technology

2) Versatile Mounting Options

- Easy DIN-rail mounting
- Flexible installation via screw-mount clips



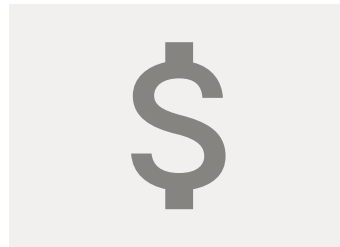


787-1216

100 ... 240 VAC
 90 ... 264 VAC
 125 ... 375 VDC
 24 VDC
 22 ... 26 VDC
 4.2 A
 100 W
 90 % typ.
 Green LED (DC OK)
 -25 °C ... +70 °C
 108 x 56 x 90

787-1226

100 ... 120 VAC; 200 ... 240 VAC
 90 ... 132 VAC; 180 ... 264 VAC
 250 ... 375 VDC
 24 VDC
 22 ... 26 VDC
 6 A
 144 W
 90 % typ.
 Green LED (DC OK)
 -25 °C ... +70 °C
 144 x 56 x 90



3) Ideal for Alternative Mounting Positions

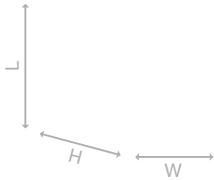
- Improved cooling in alternative mounting positions due to removable front plate

4) Highly Economical

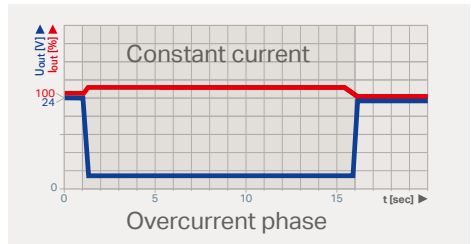
- Three times the savings thanks to low purchase costs, easy installation, and no maintenance
- Budget-friendly for basic applications

EPSITRON® COMPACT POWER

Technical Data



Item Number	787-1102
Nominal input voltage	100 ... 240 VAC
Input voltage range	85 ... 264 VAC 120 ... 373 VDC
Nominal output voltage, SELV	24 VDC
Output voltage range	22.8 ... 26.4 VDC
Output current	1.3 A
Efficiency	82 % typ.
LED indication	Green LED (DC OK)
Ambient operating temperature	-25°C ... +60°C
Dimensions (mm) W x H x L	54 x 55 x 89
Height from upper-edge of DIN-rail	



1) Easy to Connect

- CAGE CLAMP® connection technology – vibration-proof, fast, maintenance-free
- Pre-assembly via pluggable *picoMAX*® connection technology

2) Minimum Size, Maximum Performance

- Constant current characteristic under overload conditions
- 110 % output current with lowered output voltage – even during a short circuit
- High capacitive loads can be reliably started (e.g., distributed control units or HMI devices)





787-1112

100 ... 240 VAC

85 ... 264 VAC

120 ... 373 VDC

24 VDC

22.8 ... 26.4 VDC

2.5 A

88 % typ.

Green LED (DC OK)

-25°C ... +60°C

72 x 55 x 89

787-1122

100 ... 240 VAC

85 ... 264 VAC

120 ... 373 VDC

24 VDC

22.8 ... 26.4 VDC

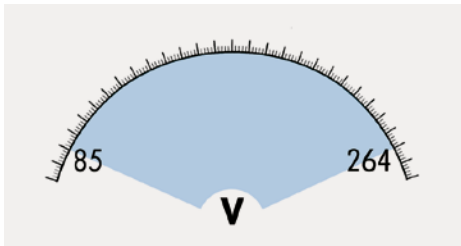
4 A

88 % typ.

Green LED (DC OK)

-25°C ... +60°C

90 x 55 x 89



3) Universal Supply

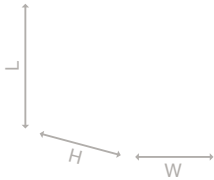
- Wide input voltage range:
85 ... 264 VAC (single-phase)
- Efficiently operates on different power grids – no need for additional conversion or adjustment
- High tolerance of voltage fluctuations within a power grid ensures a high level of operational reliability

4) Overhead Mounting

- Any type of mounting position is possible at reduced output power
- Units can even be mounted overhead (e.g., in system distribution boxes under the ceiling)

EPSITRON®

Technical Data



Item Number	787-1638	Item Number	787-1671
Description	EPSITRON® CLASSIC Power Supply	Description	Lead-Acid AGM Battery Module
Nominal input voltage	2 x 200 ... 500 VAC	Nominal input voltage	24 VDC
Input voltage range	180 ... 550 VAC; 254 ... 780 VDC	Input current I_i	0.2 A (max.)
Output voltage, SELV	24 VDC	Output voltage	24 VDC
Output voltage range	23 ... 28.5 VDC	Output current I_o	5 A
Output current	10 A	Capacity	0.8 Ah
Integrated TopBoost	Yes	End-of-charge voltage	27 VDC (at 25 °C)
Efficiency	90 %	LED indication	Battery control
LED indication	Green LED (DC OK); DC OK signal	Ambient operating temperature	-15 °C ... +40 °C
Ambient operating temperature	-25 °C ... +70 °C Device start at -40 °C type-tested	Dimensions (mm) W x H x L Height from upper-edge of DIN-rail	72 x 124.5 x 97
Dimensions (mm) W x H x L Height from upper-edge of DIN-rail	55 x 146.5 x 127		



Item Number	787-1685	Item Number	787-974	787-976
Description	MOSFET Redundancy Module	Description	Safety Transformer	
Nominal input voltage	2 x 24 VDC	Nominal input voltage	110/230 VAC	110/230 VAC
Input current	2 x 20 A / 1 x 40 A (max.)	Input voltage range	0 ... 230 VAC	0 ... 230 VAC
Nominal output voltage	24 VDC	Output voltage, SELV	12/24 VAC	12/24 VAC
Output current	40 A (max.)	Output voltage range	0 ... 24 VAC	0 ... 24 VAC
TopBoost/PowerBoost passthrough	Yes	Output current/power	3.3 A / 1.67 A 40 VA	5.2 A / 2.6 A 63 VA
Efficiency	99.5 %	Isolation voltage	4,200 VAC	4,200 VAC
Power loss	1.5 W (no load) 9.5 W (nominal load)			
LED indication	Green LED (DC OK); DC OK contact			
Ambient operating temperature	-40 °C ... +70 °C	Ambient operating temperature	-25 °C ... +55 °C	-25 °C ... +55 °C
Dimensions (mm) W x H x L Height from upper-edge of DIN-rail	42 x 139.5 x 127	Dimensions (mm) W x H x L Height from upper-edge of DIN-rail	126 x 54 x 90	144 x 54 x 90

WAGO Kontakttechnik GmbH & Co. KG

Postfach 2880 · 32385 Minden
Hansastraße 27 · 32423 Minden
info@wago.com
www.wago.com

Headquarters	+49 571/ 887 - 0
Sales	+49 571/ 887 - 222
Order Service	+49 571/ 887 - 44 333
Fax	+49 571/ 887 - 844 169

WAGO is a registered trademark of WAGO Verwaltungsgesellschaft mbH.

“Copyright – WAGO Kontakttechnik GmbH & Co. KG – All rights reserved. The contents and structure of the WAGO Websites, catalogs, videos and other WAGO media are subject to copyright protection. Distribution or modification to the contents of these pages and videos is prohibited. Furthermore, the content may neither be copied nor made available to third parties for commercial purposes. Also subject to copyright are the images and videos that were made available to WAGO Kontakttechnik GmbH & Co. KG by third parties.”