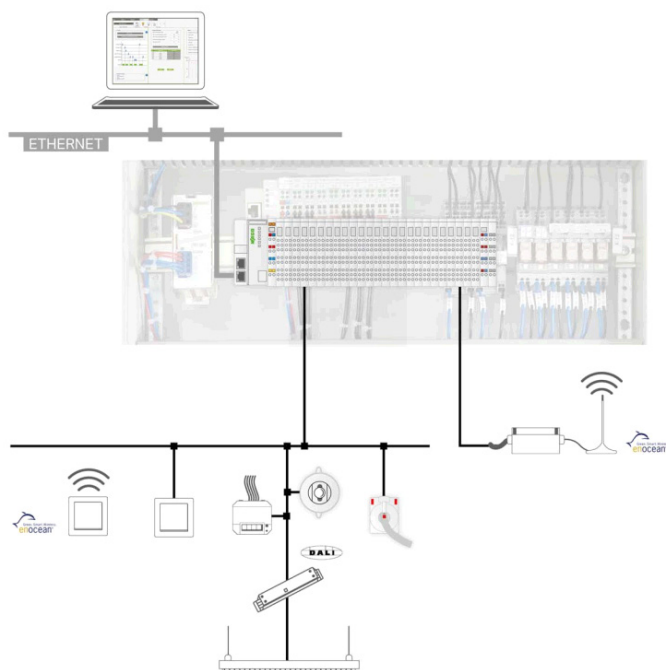
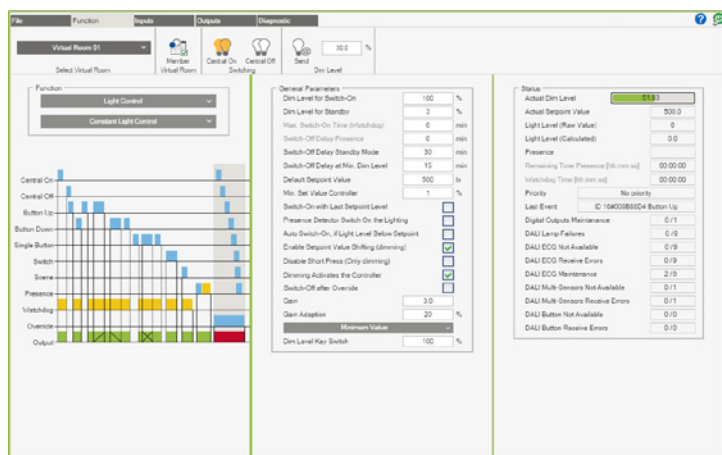


# WAGO Lighting Management



WAGO Lighting Management is a proven concept based on predefined hardware and preconfigured software, which greatly simplifies planning, commissioning and operation. The basic idea: WAGO Lighting Management is based on different lighting requirements in warehouses and production facilities. For example, a production facility is divided into virtual rooms in which the light can be flexibly adapted. Each virtual room receives signals from the sensors and actuators in order to automatically set the appropriate light intensity. By using the virtual rooms, conversions and room remodeling can be implemented quickly and simply via Web configuration.

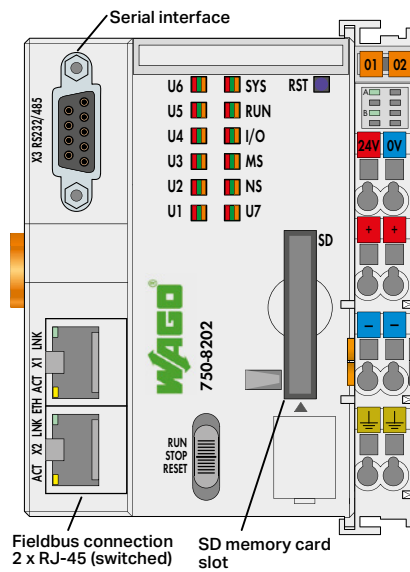
WAGO Lighting Management			
	Components	Item No.	Note
<b>Base unit</b>	Lighting Management – Controller	750-8202/000-012	The controllers can communicate with each other.
	Lighting Management – Software	Free of charge	Download: <a href="http://wago.com/applicationcontroller">wago.com/applicationcontroller</a>
	DALI Multi-Master	753-647	In addition to 64 DALI actuators (ECGs), a DALI-Multi Master supports up to 16 DALI-Multi sensors (max. 64 sensor addresses); max. 10 DALI modules per base package.
	End Module	750-600	An end module must be snapped onto the assembly at the end of a fieldbus node.
	Power Supply to I/O Node	787-1012	24 VDC supply voltage for controllers and additional modules
	Power Supply for DALI Multi-Master	787-1007	Power supply for max. 5 DALI Multi Masters
<b>Extension for inputs/push-buttons</b>	16-Channel Digital Input; 24 VDC; 3 ms	750-1405	For 1 ... 16 light push-buttons/switch inputs; max. 4 extensions per base package
<b>Extension for outputs/actuators</b>	16-Channel Digital Output; 24 VDC; 0.5 A	750-1504	For 1 ... 16 actuators/lamps/relays/ECG control; max. 2 extensions per base package
	Socket with ALZ Relay; 1 changeover contact each (1 u); 24 VDC	788-354	Light switching via relay
<b>Extension for EnOcean radio</b>	RS-232/-485 Serial Interface	750-652	Serial interface for connecting the EnOcean radio transmitter/receiver STC65-RS485-EVC for 1 ... 16 switch jacks
	EnOcean Receiver/Transmitter	2852-7101	EnOcean radio signal recording and transmission to the I/O node
	EnOcean Repeater	2852-7102	Transmission range extension, further information on planning on the EnOcean website
	Radio Transmitter; EnOcean easyfit PTM 250; 2-channel lighting control	758-940/001-000	1 ... 2 or 1 ... 4 signals, range of 30 meters in buildings to the radio receiver
	Radio Transmitter; EnOcean easyfit PTM 250; 4-channel lighting control	758-940/003-000	
<b>Extension for external time request</b>	Real-Time Clock module	750-640	Time synchronization module, if no time server connection is possible
	GPS DCF Converter	2852-7901	Converter/external receiver for time synchronization
<b>Extension for energy data measurement</b>	3-Phase Power Measurement; 690 VAC 1 A	750-495/xxx-xxx	Pre-assembled terminal block assemblies for easy connection and short-circuiting of current transformers (current transformers, see Full Line Catalog Volume 4)
	Connections for current and voltage	2007-8874, 2007-8877	
<b>Extension for sensors</b>	DALI Multi-Sensor Kit	2851-8201	Brightness measurement and motion sensor: Set for connection to a DALI bus system
	DALI Sensor Coupler	2851-8202	Sensor coupler for connecting MULTI-3-CI sensors to DALI Max. 16 DALI sensor couplers per DALI Multi Master (753-647)
	DALI HIGHBAY ADAPTER + HIGH BAY	2852-7207, 2852-7201	Brightness measurement and motion sensor for large installation heights (3 ... 13 meters)
	DALI HIGHBAY ADAPTER + VISION	2852-7207, 2852-7202	Motion sensor for large areas, large rooms, corridors or storage rooms
	DALI LS/PD LI	2852-7203	Motion sensor for office lighting (1 ... 5 meters)
	DALI Sensor Coupler HF LS LI + Radar Sensor HF LS LI	2852-7205, 2852-7206	Light and recessed ceiling sensor: combined daylight and motion detection, motion detection via radar
	DALI XC	2852-7301	Push-button coupler for connecting 4 conventional push-buttons to DALI
DALI Sensor Coupler E	2852-7204	Sensor coupler for connecting standard sensors to DALI	

## Controller PFC200

FG2; 2 x ETHERNET; RS-232/-485



Figure: 750-8202



Item Description	PFC200
Version	FG2 2ETH RS
Item No.	750-8202/000-012
<b>Technical Data</b>	
Fieldbus	Modbus TCP
Protocols	DHCP, DNS, NTP, FTP, FTPS, SNMP, HTTP, HTTPS, SSH, MODBUS (TCP, UDP, RTU)
Communication	RS-232/-485 serial interface (switchable)
Visualization	Web-Visu, Webserver
Programming	WAGO-I/O-PRO V2.3 (based on CODESYS 2.3), e!COCKPIT (based on CODESYS 3)
CPU	Cortex A8, 600 MHz
Operating system	Real-time Linux (with RT-Preempt patch)
Main memory (RAM)/internal memory (flash)/non-volatile memory (hardware)	256 MB / 256 MB / 128 KB
Program memory/data memory/non-volatile memory (software)	CODESYS 2: 16 MB / 64 MB / 128 kB e!RUNTIME: 60 MB* / 60 MB* / 128 kB
Number of I/O modules per node (max.)	250
Input and output process image (internal) max.	1000 words
Input and output process image (MODBUS) max.	CODESYS 2: 1000 words e!RUNTIME: 32,000 words
Supply voltage (system)	24 VDC (-25 ... +30 %)
Total current for system supply	1700 mA
Ambient temperature (operation)	0 ... +55 °C
Dimensions W x H x D	78.6 x 71.9 x 100 mm
<b>Approvals</b>	CE, UL 508, ANSI/ISA, ATEX/IECEX
Data sheet and further information, see:	<a href="http://wago.com/750-8202/000-012">wago.com/750-8202/000-012</a>
<b>Accessories</b>	
SD memory card, 2 GB	Item No. 758-879/000-001
WAGO communication cable	750-923

\*Program and data memory (dynamically distributed)

e!COCKPIT, WAGO-I/O-PRO Software V2.3  
see Full Line Catalog, Volume 3

Mini-WSB Quick Marking System,  
see Full Line Catalog, Volume 6