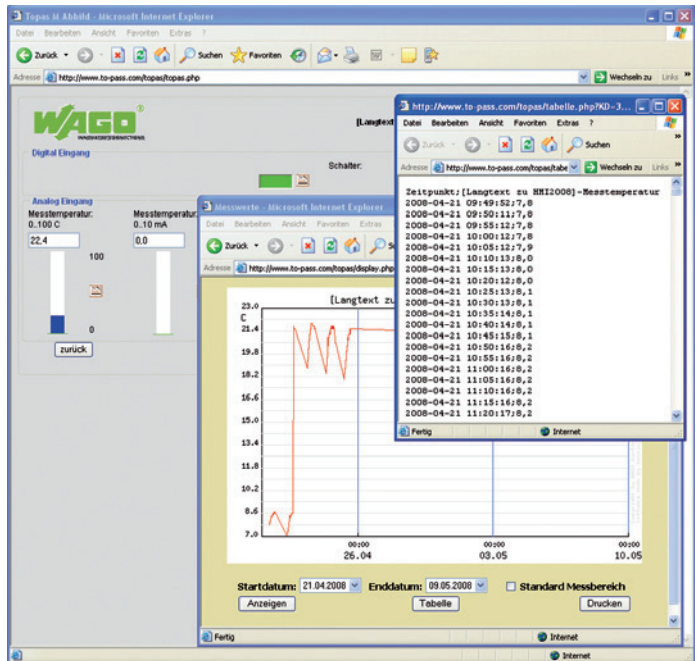


# TO-PASS® Web Portal

## WEB portal for visualizing and archiving measured values and messages



The TO-PASS® product family is designed for wireless communication of signals and messages. Connection is established via the GSM global mobile radio network. Beyond other communication channels (e.g., email, SMS or fax), the devices can also transmit data to a Web server. This allows the creation of a permanent GPRS connection that's similar to a dedicated line.

The process image (i.e., states and values of all digital and analog inputs of a TO-PASS® telecontrol module) is transmitted to the Web server with a time stamp at a configurable interval and then stored in the database. Standard data loggers and the cumbersome process of reading out data are no longer necessary. Controlling and managing data is simplified by using an Internet browser via: <http://www.to-pass.com>.

With the base module, a user receives a designated area on the Web portal. Access is protected with a username and password. Depending on the expansion level (starter, standard, unlimited), a varying number of devices can log into the portal.

The data recorder function allows digital, analog and MODBUS data from connected devices to be recorded and displayed from 90 minutes to 512 days. Data can also be exported in CSV format.

The "Admin" option is an addition to the base module. It allows the user to assign additional usernames with passwords, as well as customers and devices with different access authorizations.

The "Alarm" option is an addition to the base module. It allows the module to display and administer alarms generated from analog, digital and MODBUS values. Using analog values, up to four limit values can be configured for each measurement. An alarm list allows all alarms to be displayed and acknowledged. This option also allows the user to configure the recipients and the time that an alarm will be sent to them via SMS or e-mail.

The usage rights for the base module with "Admin" and "Alarm" options must be purchased once. Afterward, just a low flat-rate fee will be charged monthly.

TO-PASS® Web Portal	
Version	Item No.
Basic Unlimited (unlimited number of devices)	761-700
Basic Starter (max. 5 devices)	761-700/000-005
Basic Standard (max. 20 devices)	761-700/000-020
Monthly User Fees	761-701
Admin Unlimited (unlimited number of devices)	761-702
Admin. Starter (max. 5 devices)	761-702/000-005
Admin. Standard (max. 20 devices)	761-702/000-020
Alarm Unlimited (unlimited number of devices)	761-703
Alarm Starter (max. 5 devices)	761-703/000-005
Alarm Standard (max. 20 devices)	761-703/000-020
Individual	761-704

Software functionality	User administration via user name and password; Device activation via Internet; Configuration of measured values via Internet; History of measured values: unlimited number of data sets; Display of measured values: Table and graphical display; Evaluation of measured values: Graphical evaluation of measured values; Export of measured values: CSV format (MS Excel compatible)
Topology	No. of devices unlimited
Other required software	Microsoft® Internet Explorer with Internet access
Data sheet and further information, see:	<a href="http://wago.com/761-700">wago.com/761-700</a>

Internet Explorer is a registered trademark of Microsoft Corporation