



WAGO *SPEEDWAY* 767

System Update

767-xxxx

Version 1.0.3

Introduction

Every conceivable measure has been taken to ensure the accuracy and completeness of this documentation. However, as errors can never be fully excluded, we always appreciate any information or suggestions for improving the documentation. Please feel free to e-mail us at documentation@wago.com.

Service and Technical Support

Additional information regarding this and other products (e.g., data sheets) is available on our website: www.wago.com.

If you can not eliminate errors or faults using the measures described in this manual we will be glad to assist you further. Contact us at:

AUTOMATION Support
Phone: +49 571 887 555
Fax: +49 571 887 8555
E-mail: support@wago.com

Additional Support

The Seminar and Training department offers useful seminars to support you in the use of WAGO products. For more information, visit our website or call +49 571 887-327, or send an e-mail to training@wago.com.

Trademarks

We wish to point out that the software and hardware terms as well as the trademarks of companies used and/or mentioned in this manual are generally protected by trademark or patent.

Copyright © 2010 by WAGO Kontakttechnik GmbH & Co. KG. All rights reserved.

Table of Contents

Introduction	2
1 Notes about these System Update.....	4
2 System Update.....	6
2.1 Adding the DTM System Update.....	6
2.2 Go online to 767 Nodes using Update DTM	8
2.3 Updating the 767 Components.....	9

1 Notes about this System Update

Firmware update for the 767 Series components is performed via system update. To ensure that the fieldbus node remains consistent and executable after updating the firmware, system update must be performed for both fieldbus coupler and connected I/O modules.

NOTICE

Follow the manuals of the 767 components

This document is an excerpt from the operating instructions for WAGO fieldbus couplers, "WAGO-SPEEDWAY 767" Series.

For safe handling of 767 components, you must be familiar with the manuals of the I/O modules and fieldbus couplers.

NOTICE

System update via PROFINET fieldbus couplers

Before updating, observe the following measures to prevent any possible damage to the 767 system:

- The power supply must not be disconnected while updating!
 - The fieldbus must be physically connected. To exclude any fieldbus interference, there must be no data transmission via the fieldbus (ACT/LNK-LED(s) glowing green).
-

NOTICE

System update via non PROFINET fieldbus couplers

Before updating, observe the following measures to prevent any possible damage to the 767 system:

- The power supply must not be disconnected while updating!
 - To exclude any interferences by the fieldbus, the fieldbus cable must be disconnected before updating!
-

Requirement:

- You have installed the DTM (759-370) WAGOframe
- You have installed the DTM (759-371) WAGO service interface
- You have installed the DTM (759-922) USB driver
- You have installed the DTM (759-362) system update
- Update packages are available for the connected 767 Series components.

System Update Procedure

To perform a system update for each 767 Series component, please complete the following steps:

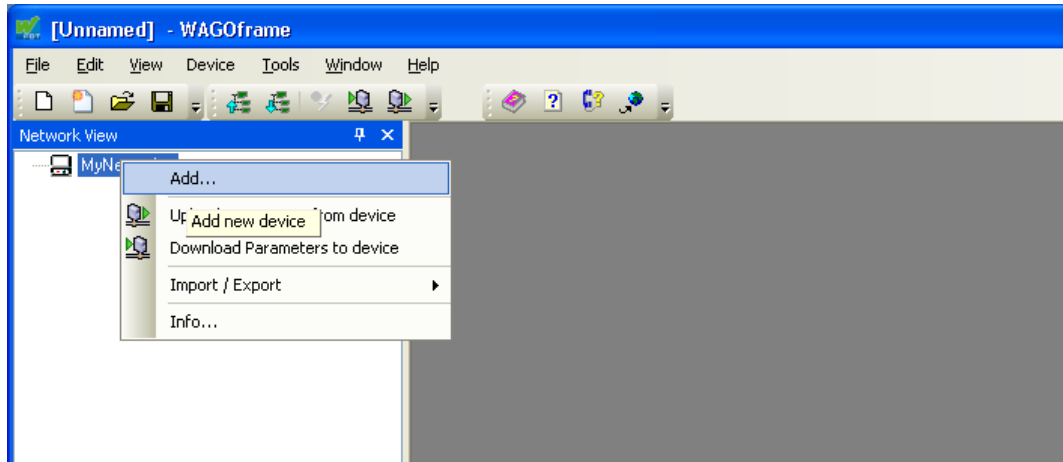
1. Read 767 components' parameters and save them on your PC.
2. Update 767 Series components' firmware.
3. Rewrite parameters from your PC to the 767 Series components.
4. Set parameters to valid and finish the procedure.

2 System Update

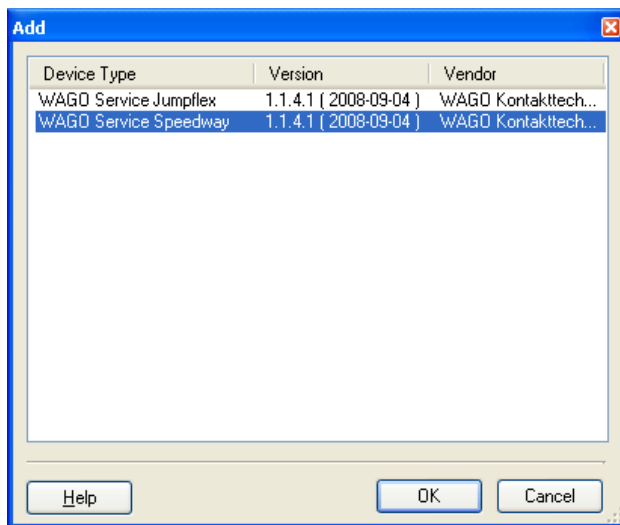
2.1 Adding the DTM System Update

To add the DTM system update to WAGOframe, please proceed as follows:

1. Right-click on "MyNetwork" in the "Network View" pane.

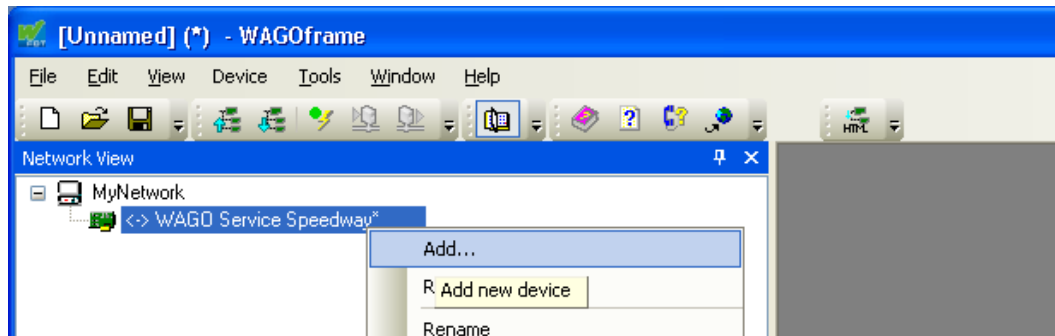


2. In the context menu, select **Add....** The "Add..." dialog box opens.

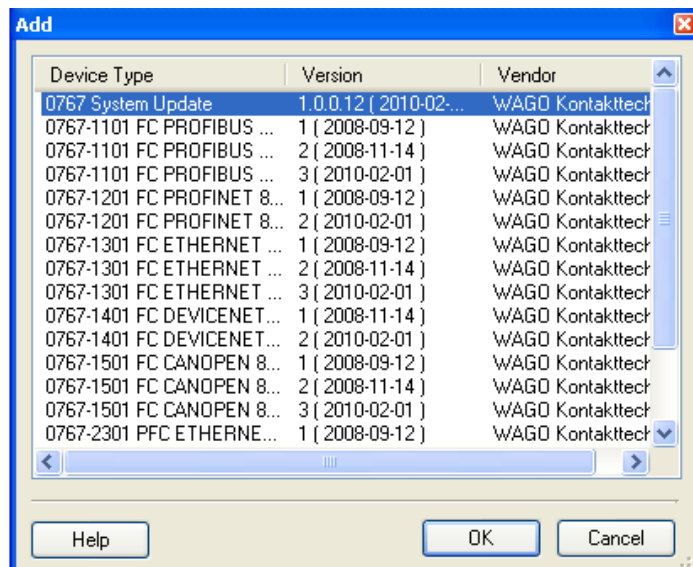


3. In the "Add" dialog box, select **WAGO Service Speedway**.
4. Click **[OK]** to confirm your selection.

5. In "Network View", right-click on the "WAGO Service Speedway" device driver.
6. In the **Add...** context menu, select "Add". The "Add" dialog box opens.



7. In the "Add" dialog box, select the DTM 0767 System Update.

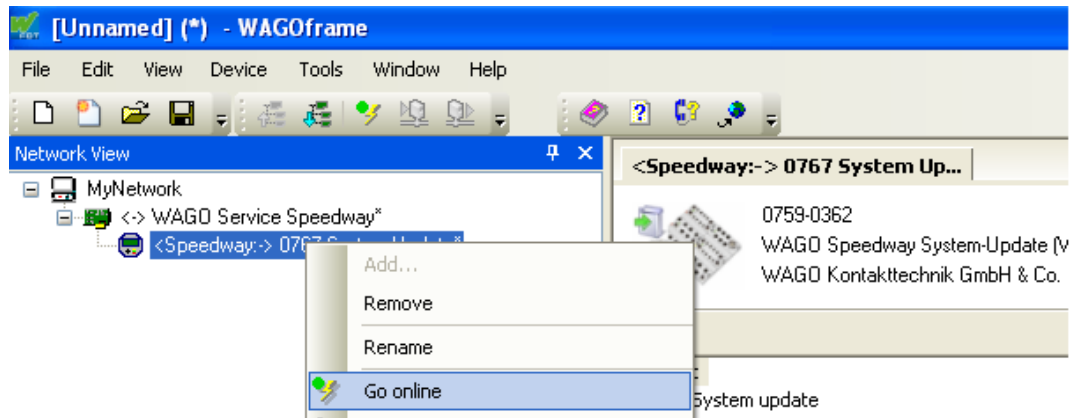


8. Click **[OK]** to confirm your selection.

2.2 Go online to 767 Nodes using Update DTM

The firmware can only be updated when a communication connection exists between Update DTM and 767 node. Please proceed as follows:

1. In the "Network View", right-click on the "<Speedway:> 0767 System Update" device driver.
2. In the context menu, select **Go online**. When the progress bar displays 100% and the entry is displayed in *bold italics*, the communication connection is established.



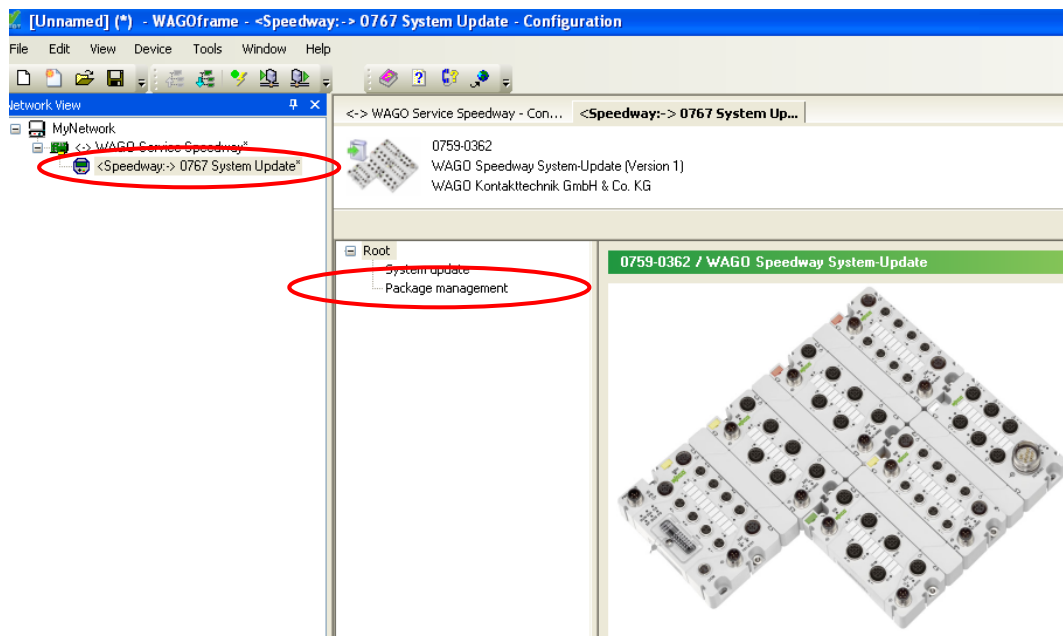
2.3 Updating the 767 Components

The current firmware is available from WAGO Support. Send an e-mail with the subject "Current Speedway Firmware" and the item number of the respective 767 components to: support@wago.com.

Import firmware packages

To use the received firmware packages, import them into the DTM system update. Please proceed as follows:

1. Save the received firmware packages with the ".wup" extension to any directory on your PC.
2. Open the DTM user interface by double clicking "**0767 System Update**" in the network view.

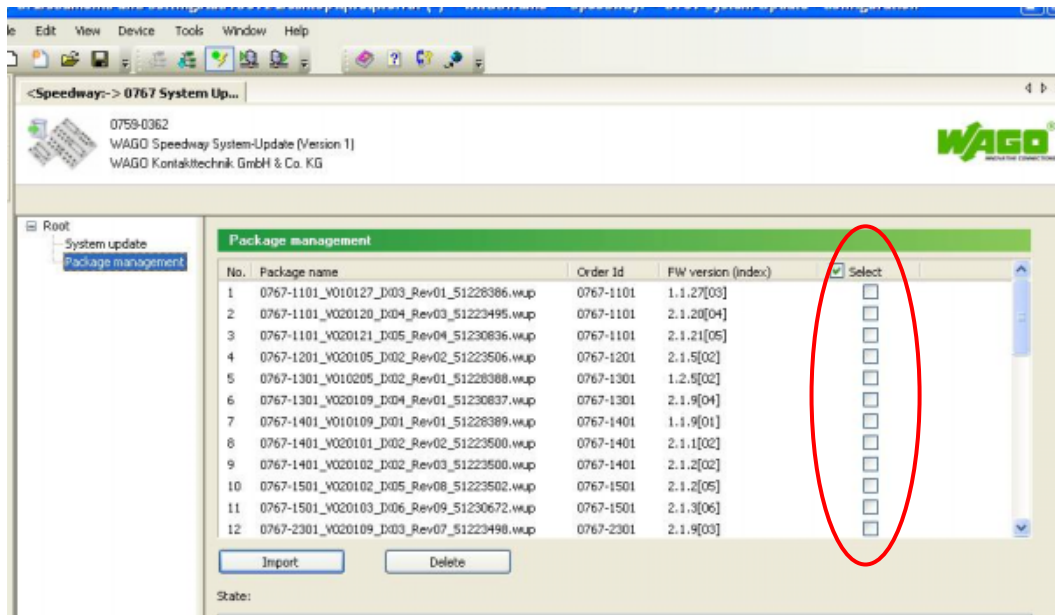


3. Click "Package Management" in the left window of WAGOframe.
4. To import the received firmware files, click **[Import]**. In the window that opens, go to the directory where you have saved the firmware files and select the file to be used. Click **[Open]** to apply the files.

Delete firmware packages

To maintain a clear "Package Management" interface, you can remove unneeded update packages from the view. Please proceed as follows:

1. Select the required firmware files in the right window.
2. Click **[Delete]** to remove the selected firmware packages.



System update

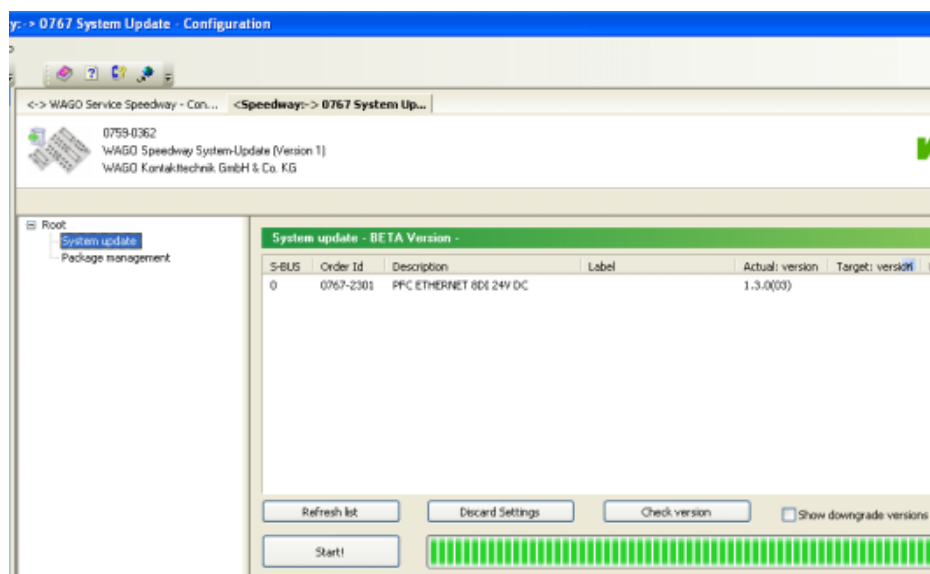


Note

When updating the firmware of the fieldbus coupler, the saved module parameters may be overwritten. Therefore, check your existing configuration after updating the firmware.

Perform the system update here. The module settings you made normally remain unchanged. Otherwise, a corresponding warning message appears. If you still want to update the firmware, the 767 components are returned to their default state.

1. Click "System Update" in the left window.



2. The fieldbus coupler with all connected I/O modules are listed in the right window. All 767 components that can be updated are pre-selected. If the pre-selection is incorrect or if specific 767 components should not be updated, deselect them.
 "Actual Version": Firmware currently present on the device
 "Target Version": Version of the firmware that should be loaded into the 767 components. If multiple Target versions can be selected, select the one relevant to you.

- Click **[Start!]** to update the system. The 767 components are marked in yellow while being updated.

Note



During the firmware updating process, the fieldbus coupler disconnects each of its COM ports. A PC equipped with Windows 2000 will detect this, and a Windows message appears. This is not an error message. Confirm the message by pressing **[OK]**.

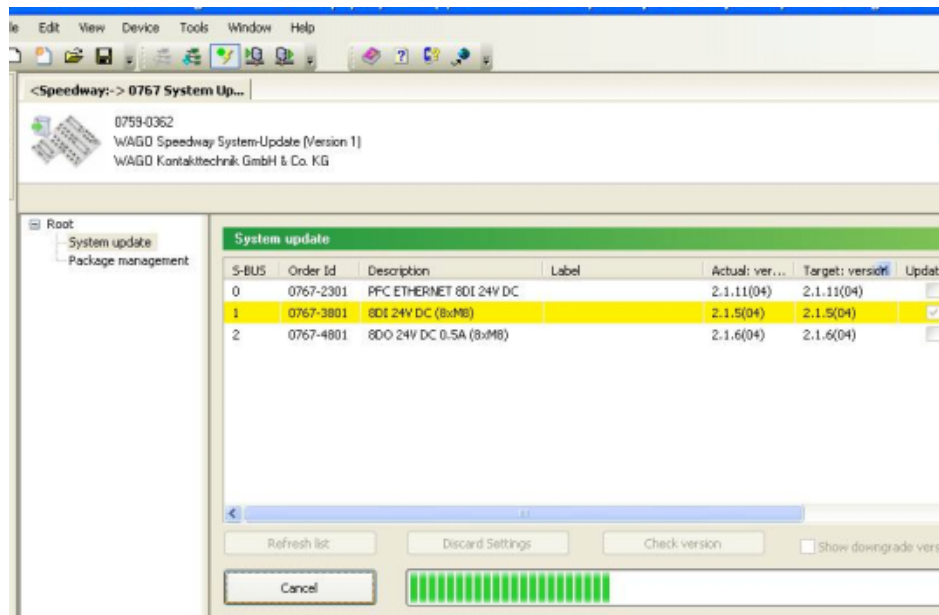
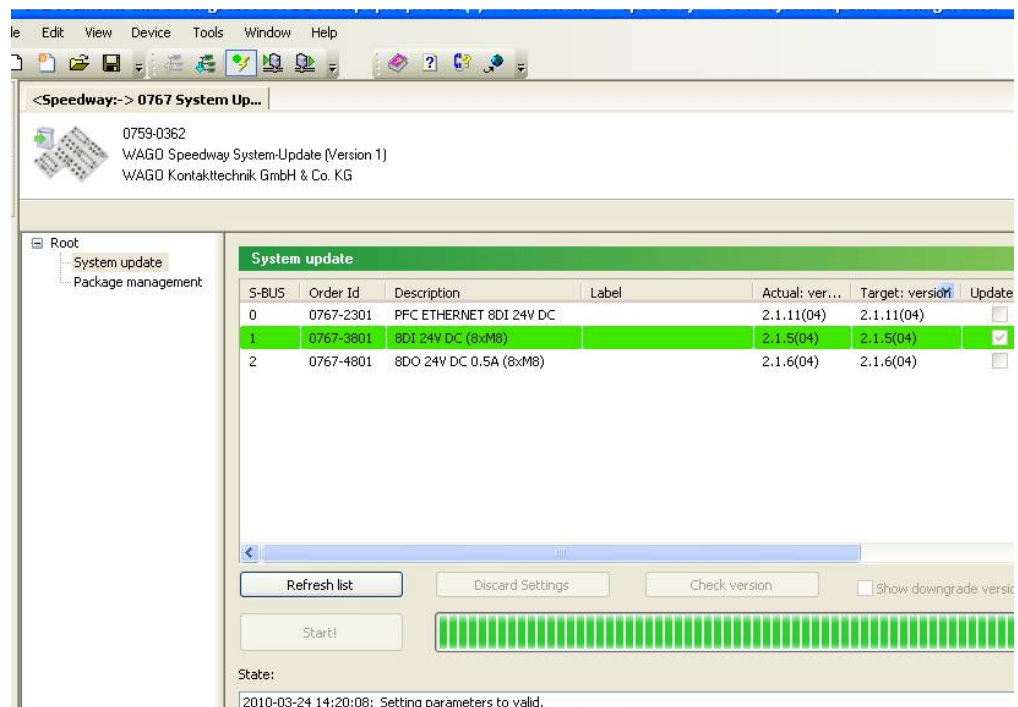


Table 1: Buttons

Button	Description
[Refresh List]	Use this function to read the node design and the view updates.
[Discard Settings]	Discard the selections and settings performed by you.
[Check Versions]	If you made your selection, click this button to perform a plausibility check. This checks whether the configuration you selected is possible (also automatically performed when starting the system update).
Display downgrade versions	If this checkbox is selected, the versions to downgrade a device are also displayed in the list of target versions.
[Start!]/[Abort]	Start/abort system update.

- If the system update is finished, the updated 767 components are displayed in green (see figure).



During system update, all relevant information is stored on your PC. Update can be repeated subsequently if the system update fails (components are displayed in red). In this case, original parameters remain unchanged.

If the update for a device fails, please contact WAGO Support.

WAGO Kontakttechnik GmbH & Co. KG
Postfach 2880 D-32385 Minden
Hansastraße 27 D-32423 Minden
Telefon: 05 71/8 87 – 0
Telefax: 05 71/8 87 – 1 69
E-Mail: info@wago.com
Internet: <http://www.wago.com>

